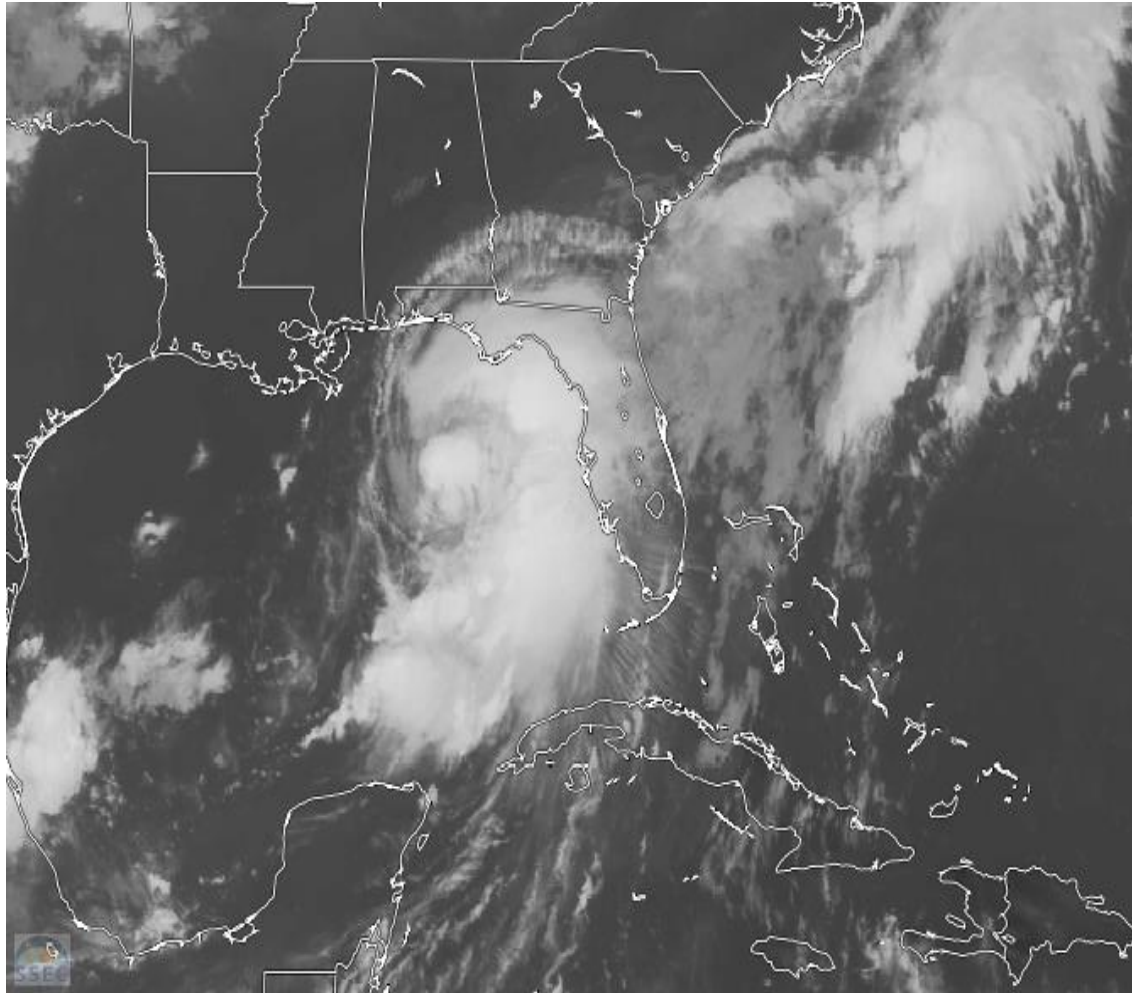


Florida/GA/SC: Tropical Storm Hermine

September 1, 2016

Source: University of Wisc. SSEC



Tropical Storm Hermine is a strengthening tropical storm with surface winds at 55 kts gusting to 65 kts. Tropical Storm Hermine has continued to move northeast at a quick 12 kts the past 6 hours as it continues towards Florida.

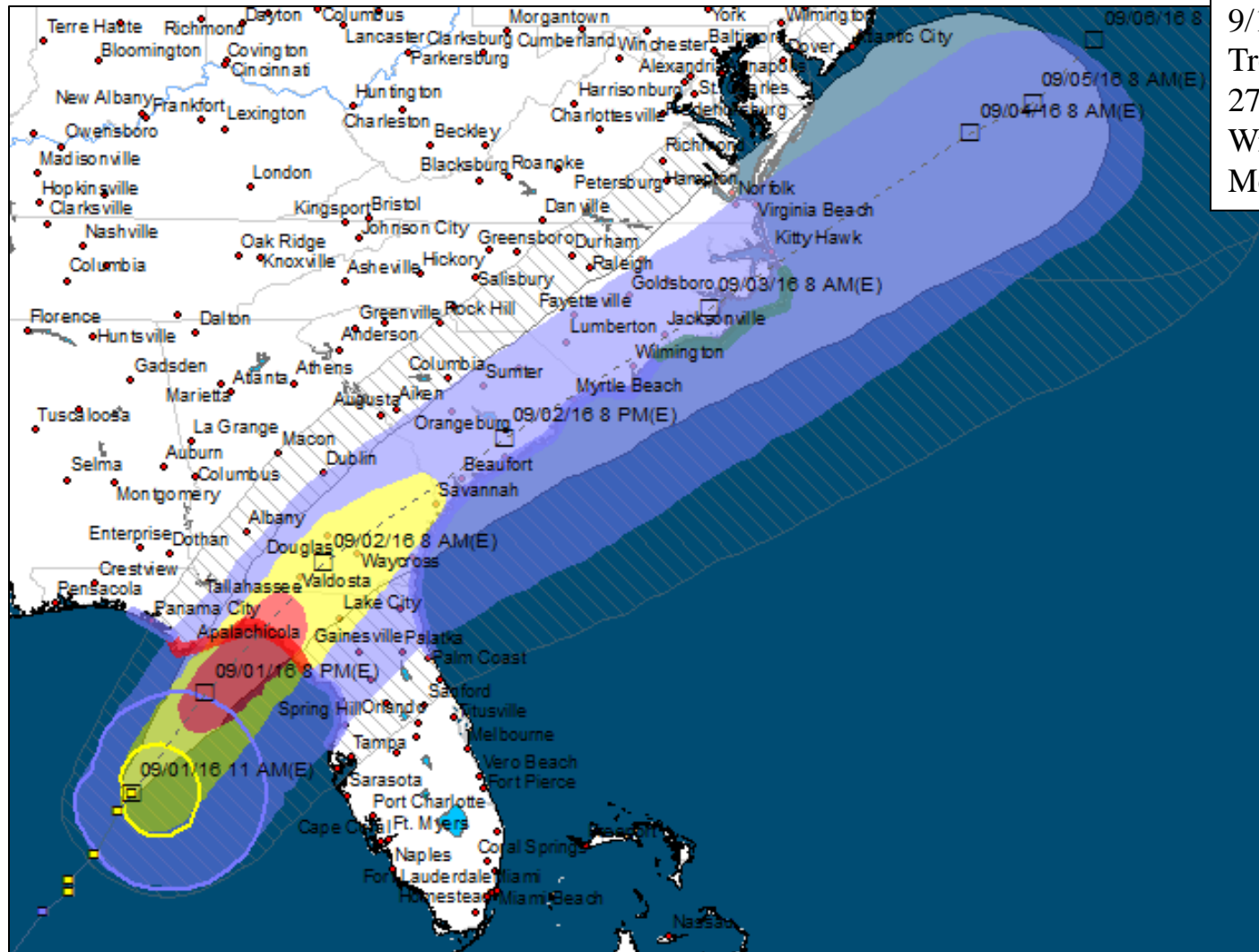
Tropical Storm Hermine is expected to continue on its current track to the northeast. Hermine is expected to strengthen over the next 6 to 12 hours. The system is forecasted to reach peak strength with forecasted sustained winds at 65 kts by 2/00Z (making it a weak CAT 1) and make landfall as a weak CAT 1 system just southeast of Tallahassee overnight tonight into early Friday morning (Aug 1st-2nd).

Precipitation is expected to be heavy to torrential with upwards of 6 to 10 inches (locally upwards of 12 inches) expected across favored coastal regions of north-western Florida. Other heavy precipitation (5 to 8 inches) is forecasted for the eastern portions of Georgia, South Carolina, and North Carolina as the system continues across the southeastern US over the next couple days. The precipitation is expected to create coastal and inland flooding with some western low coastal regions of Florida expected to see flood inundation upwards of 6 to 9 feet above ground level. Other costal regions of southeastern Georgia and South Carolina with 1 – 3 feet inundation forecasted for the lowest areas.

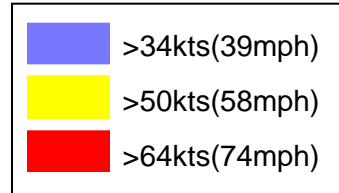
Florida/GA/SC: Tropical Storm Hermine Forecast Track

September 1, 2016

Source: National Hurricane Center



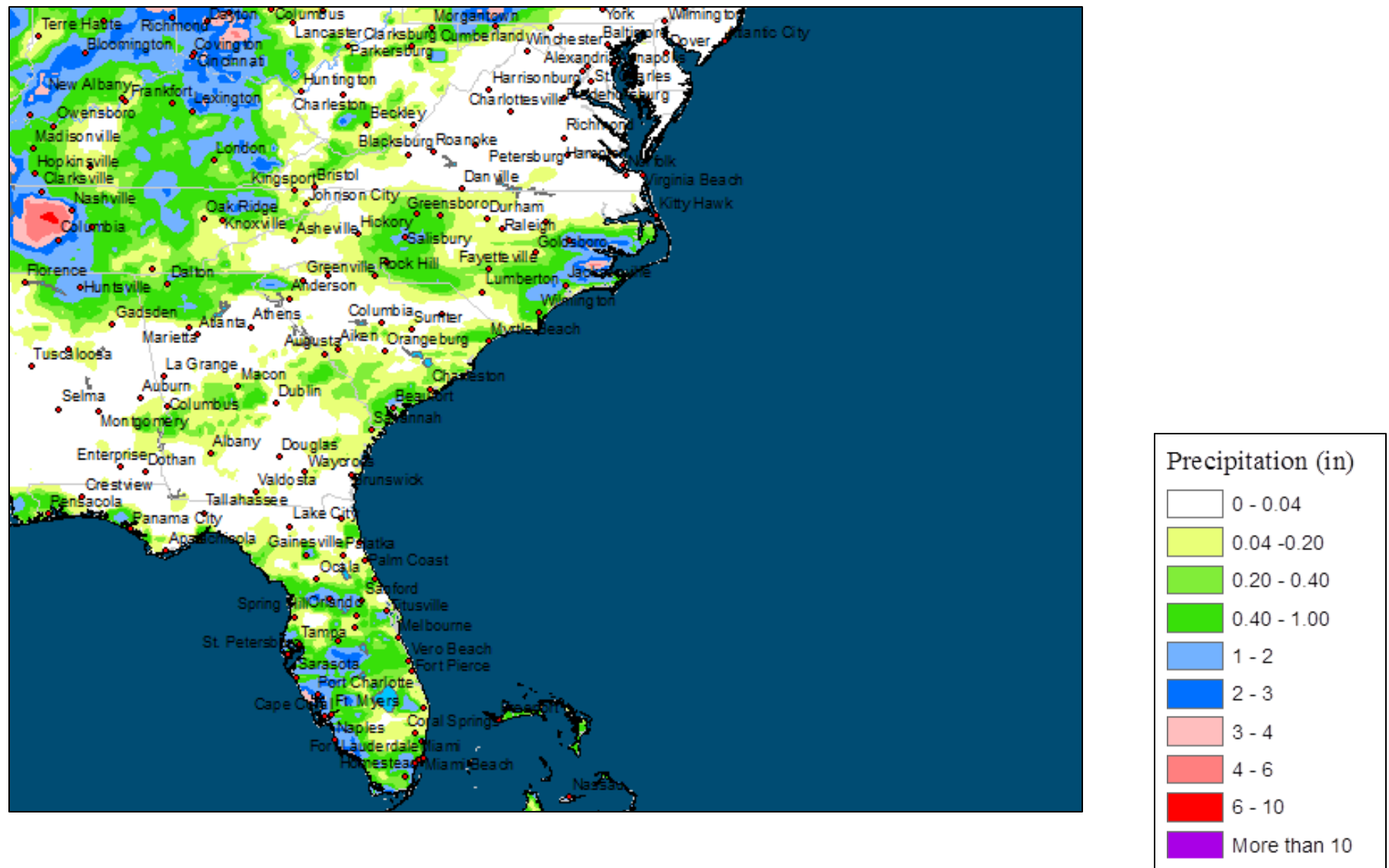
Latest Advisory 016
9/1/2016 (1500z)
Tropical Storm Hermine
27.4 N 86.0 W
Wind Speed 55kt gust 65kt
Movement 30° at 12kt



Florida/GA/SC: TS Hermine 3 Day Cumulative Precip

August 29, 2016 through August 31, 2016

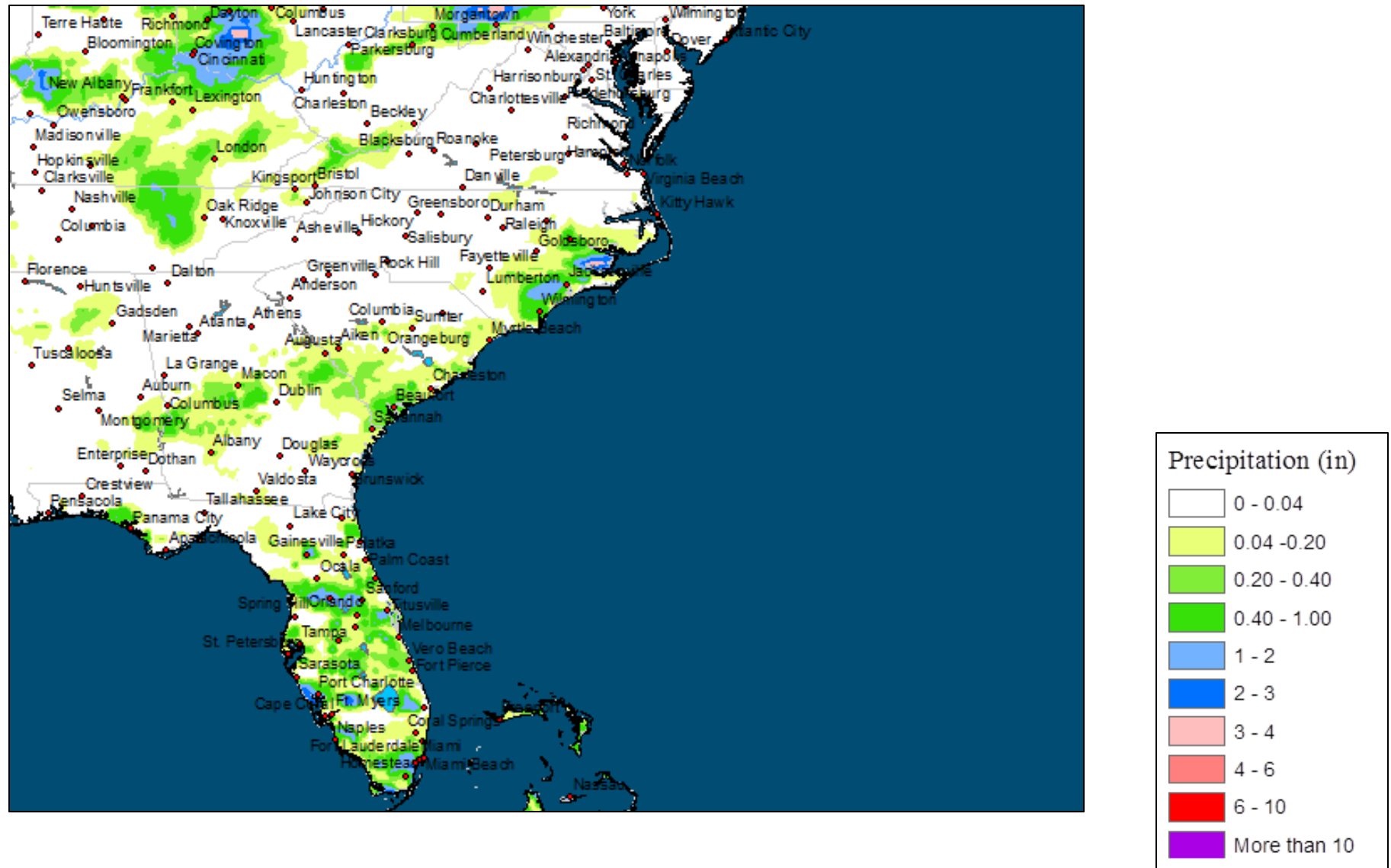
Source: Global Precipitation Measurement Data



Florida/GA/SC: TS Hermine Current Precipitation

August 31, 2016

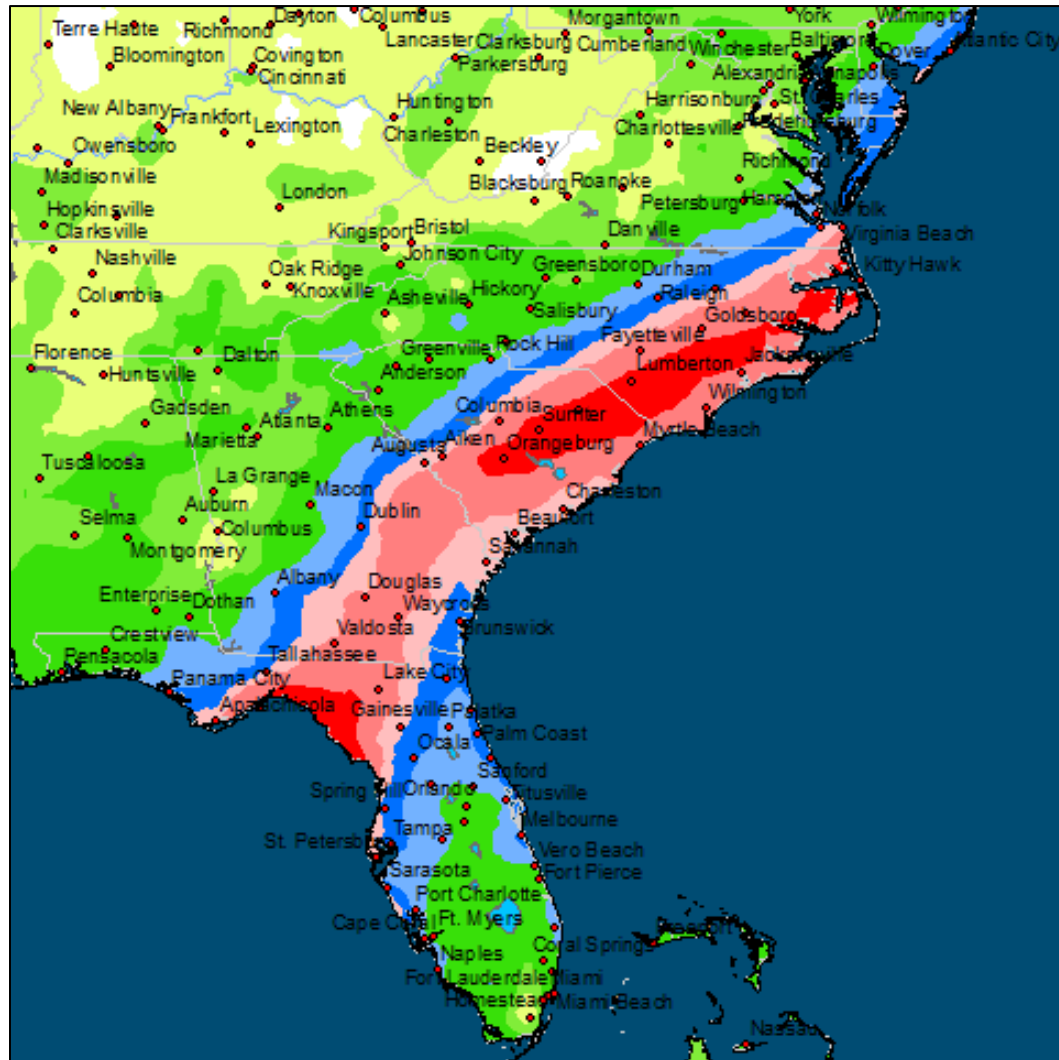
Source: Global Precipitation Measurement Data



Florida/GA/SC: TS Hermine Forecast 7 Day Precipitation

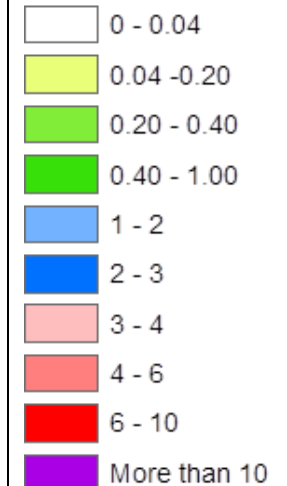
September 1, 2016 through September 7, 2016

Source: Global Forecast System Data



Heavy precipitation – upwards of 6 to 10 inches – is possible in favored coastal regions of northern Florida (especially between Tallahassee and Spring Hill) over the next 24 to 48 hours as Tropical Storm Hermine continues to strengthen over the next 12 hours. Other heavy precipitation is forecasted for the eastern portions of South Carolina, North Carolina, and Georgia. Torrential precipitation rates are possible between 1/18Z and 2/12Z as Hermine transitions across northern Florida. The precipitation is expected to create coastal and inland flooding with some north-western low coastal regions expected to see flood inundation upwards of 6 to 9 feet above ground level with 1 to 3 feet expected for coastal areas of Georgia and South Carolina.

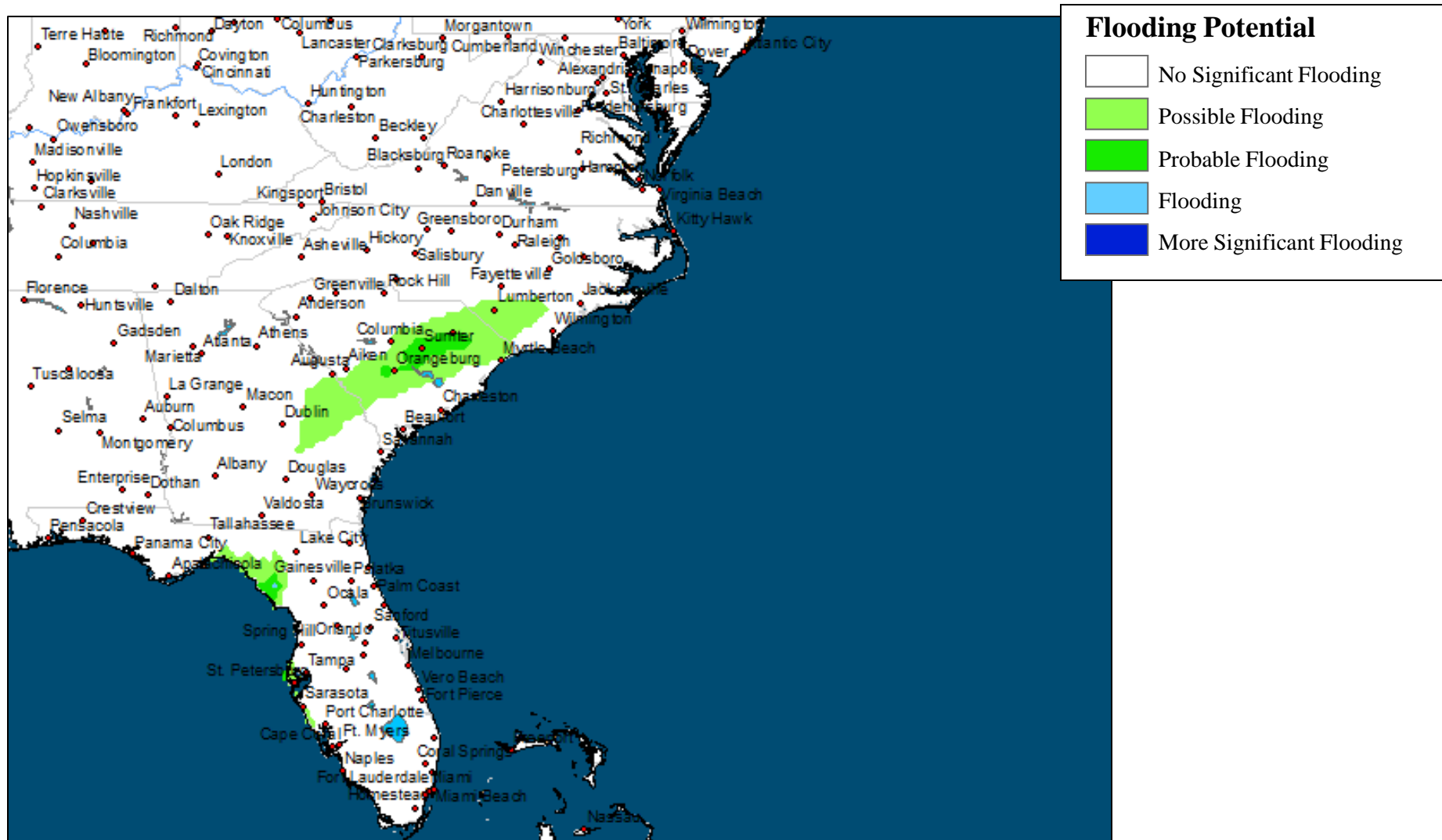
Precipitation (in)



Florida/GA/SC: TS Hermine Initial Flood Potential Map

September 1, 2016

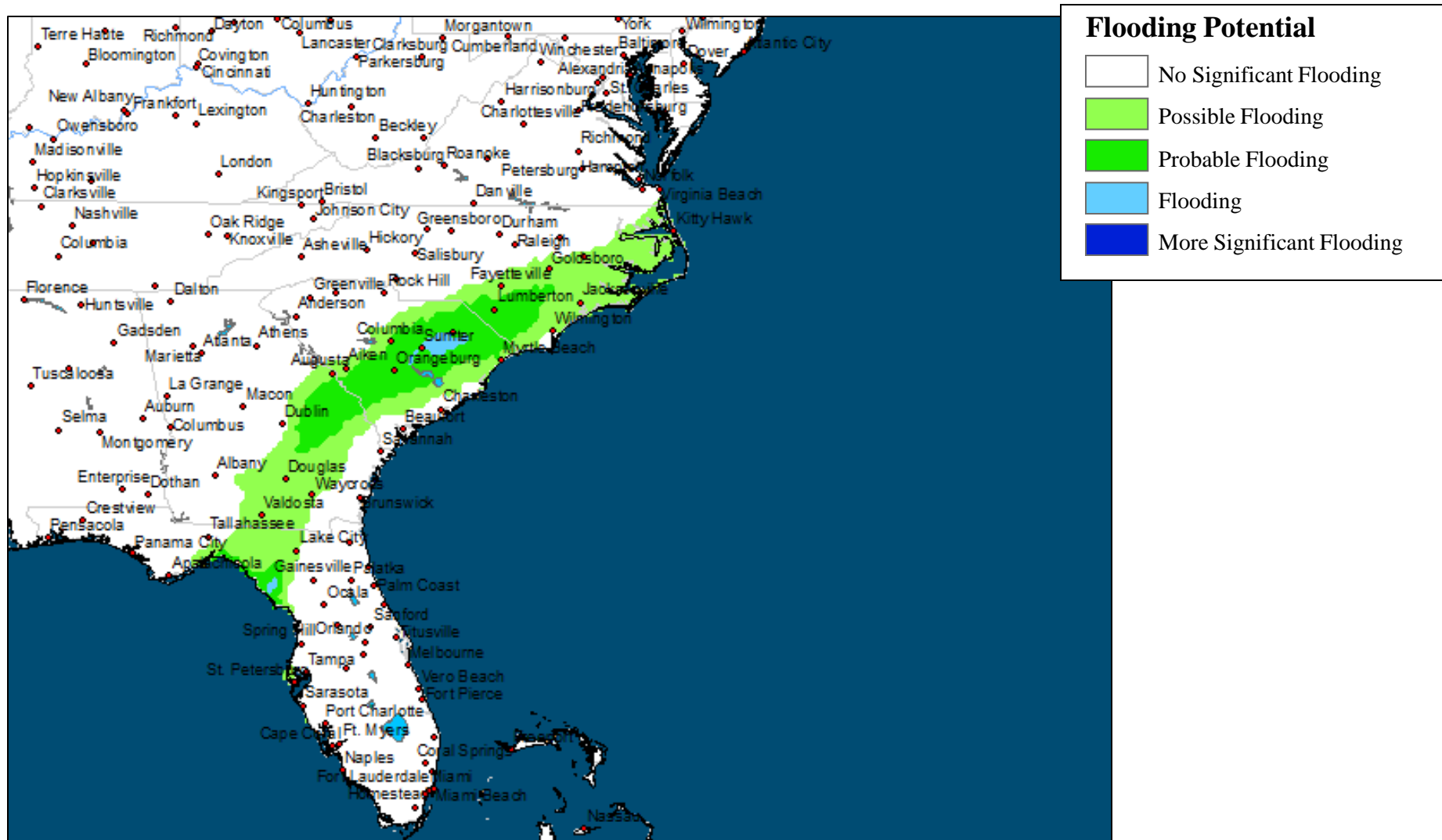
Source: Satellite Derived Precipitation and NOAA GFS Precipitation forecast



Florida/GA/SC: TS Hermine Day 1 Flood Potential Map

September 2, 2016

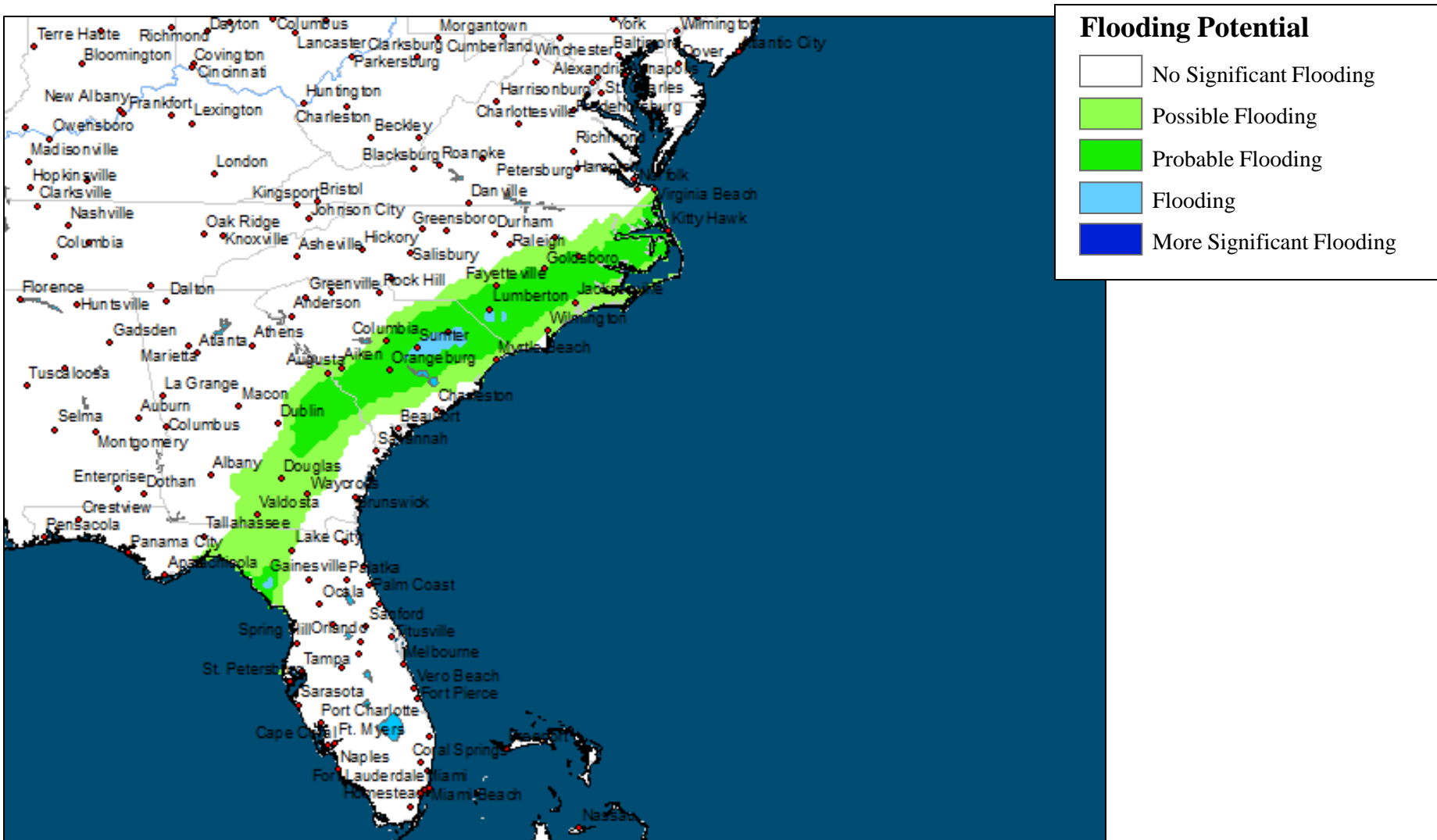
Source: Satellite Derived Precipitation and NOAA GFS Precipitation forecast



Florida/GA/SC: TS Hermine Day 2 Flood Potential Map

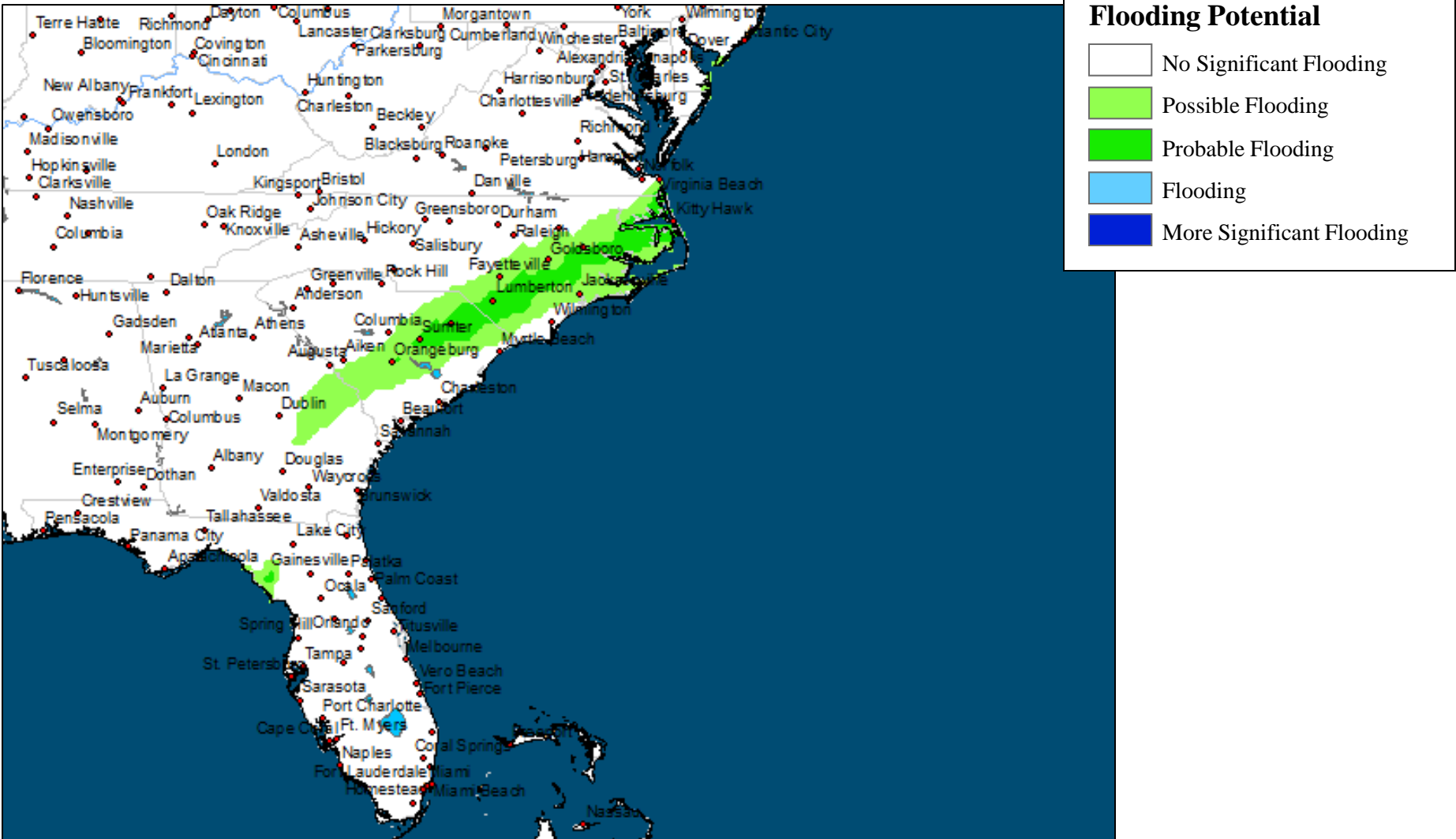
September 3, 2016

Source: Satellite Derived Precipitation and NOAA GFS Precipitation forecast



September 4, 2016

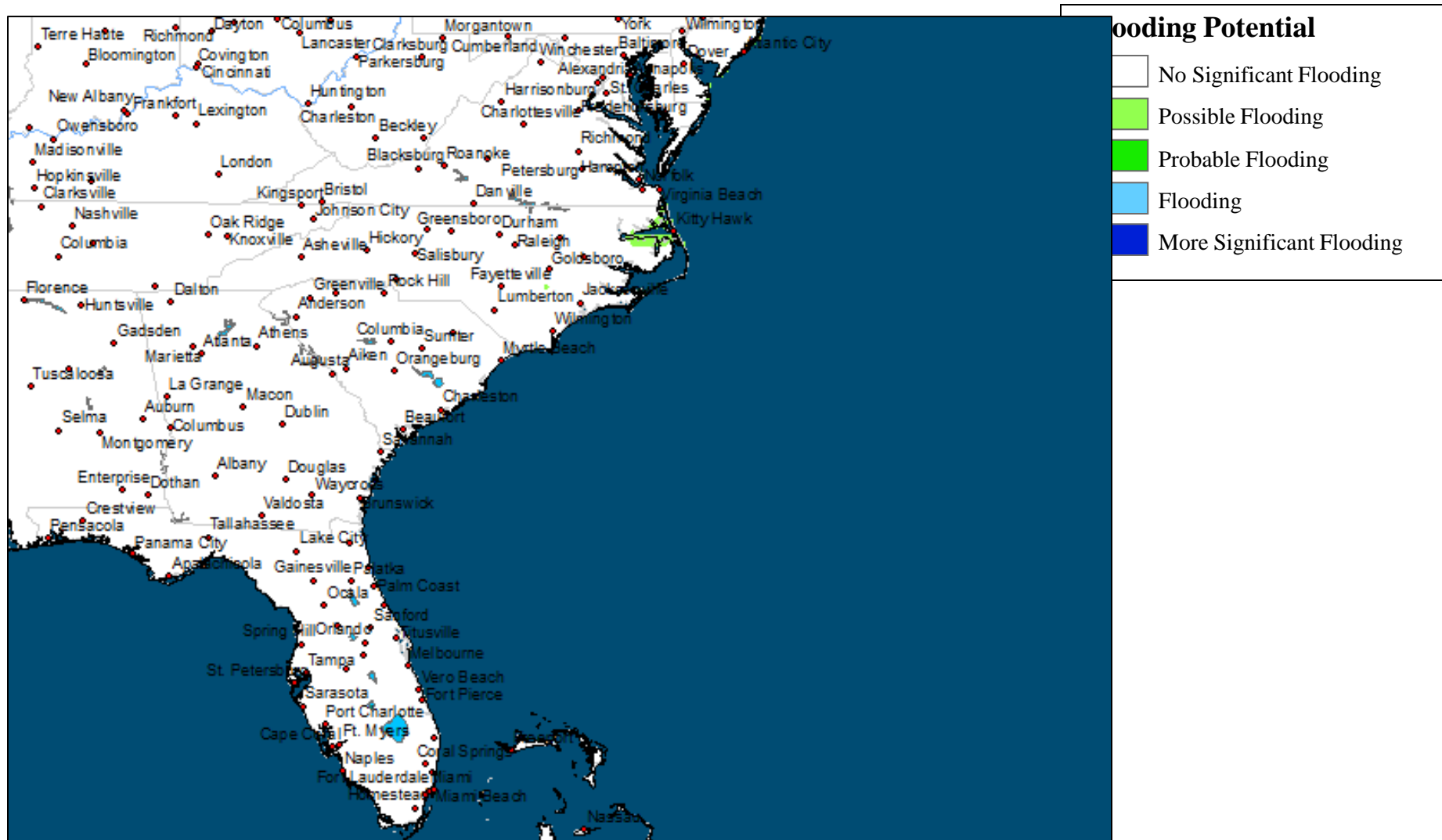
Source: Satellite Derived Precipitation and NOAA GFS Precipitation forecast



Florida/GA/SC: TS Hermine Day 4 Flood Potential Map

September 5, 2016

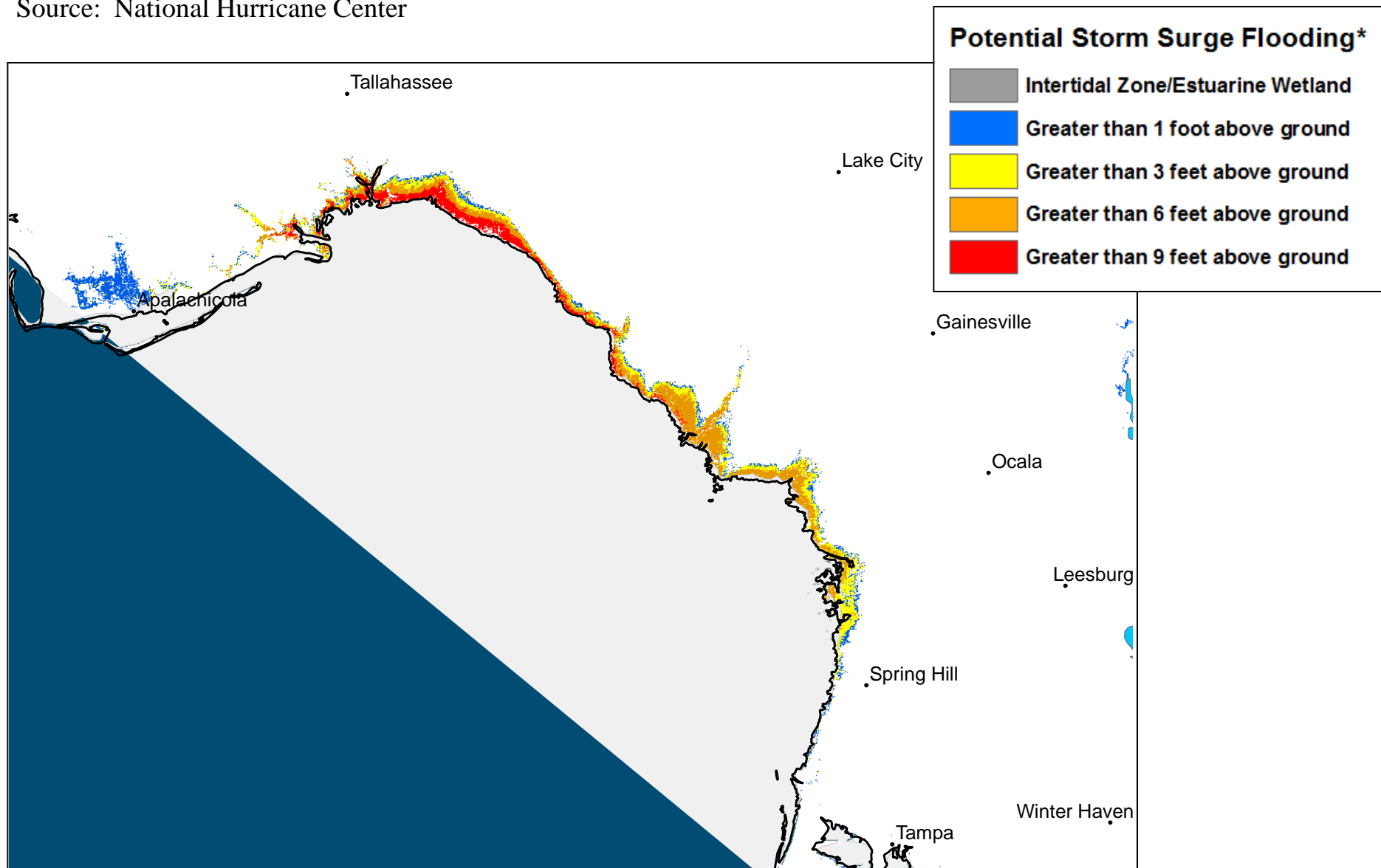
Source: Satellite Derived Precipitation and NOAA GFS Precipitation forecast



Florida: Tropical Storm Hermine Flood Inundation Map

Forecast valid as of September 1, 2016

Source: National Hurricane Center

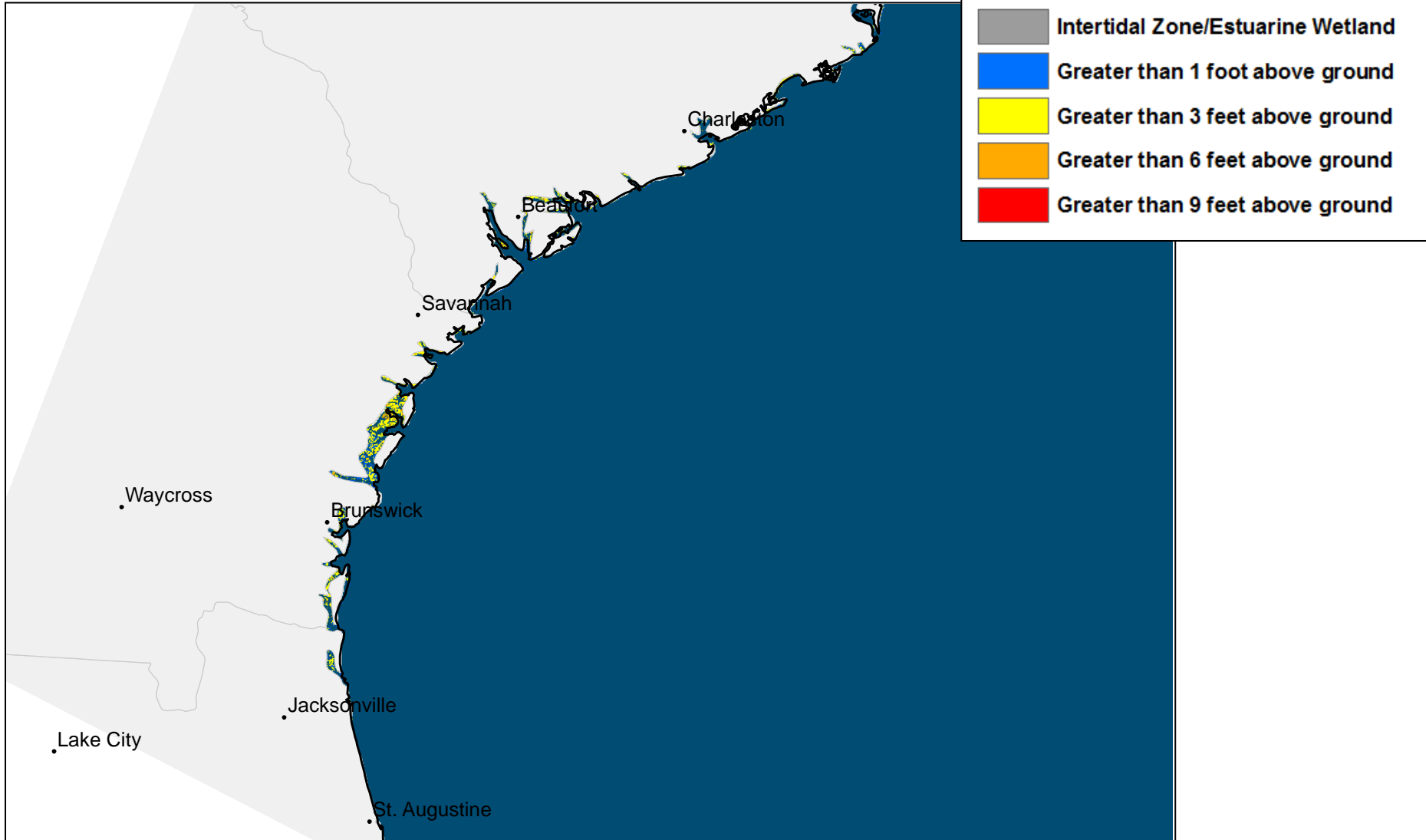


*Displayed flooding values indicate the water height that has about a 1-in-10 (10%) chance of being exceeded.

Georgia / South Carolina: Tropical Storm Hermine Flood Inundation Map

Forecast valid as of September 1, 2016

Source: National Hurricane Center



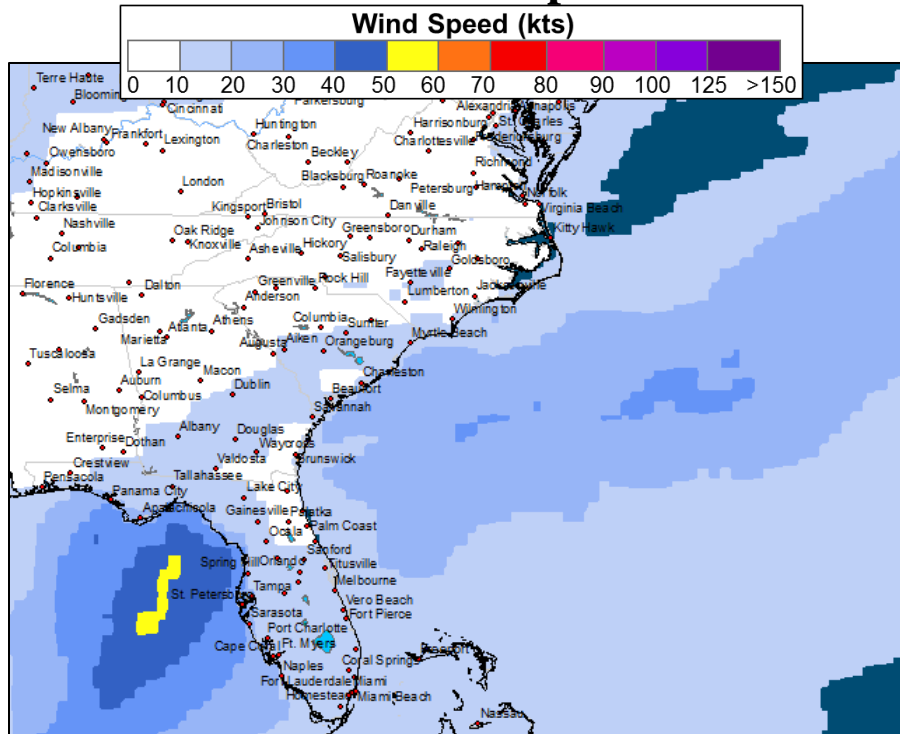
*Displayed flooding values indicate the water height that has about a 1-in-10 (10%) chance of being exceeded.

Florida/GA/SC: TS Hermine Day 1 Wind Forecast

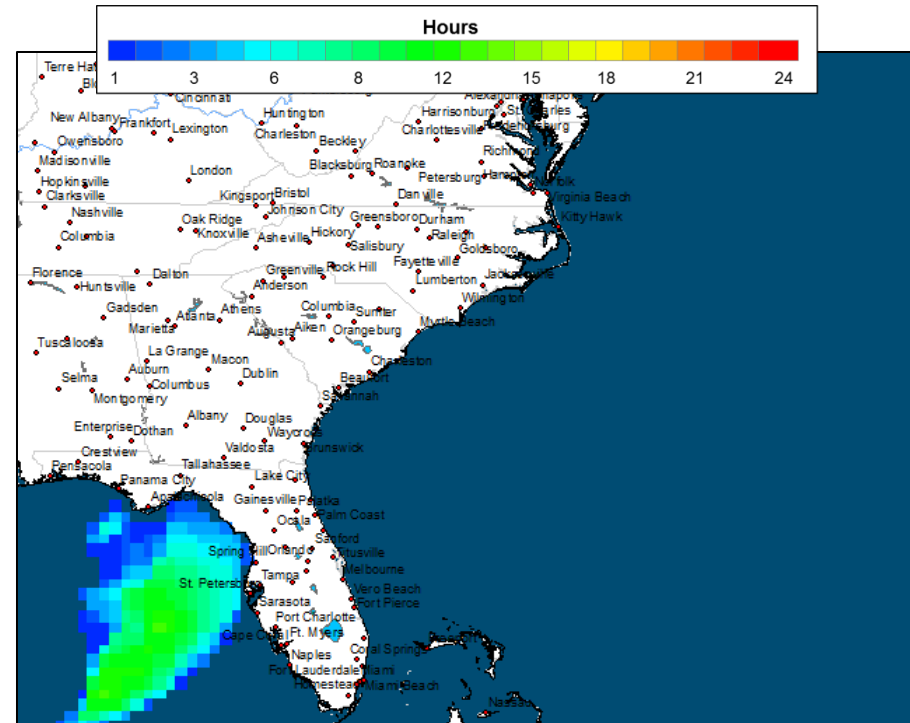
September 2, 2016

Source: NOAA GFS Wind forecast

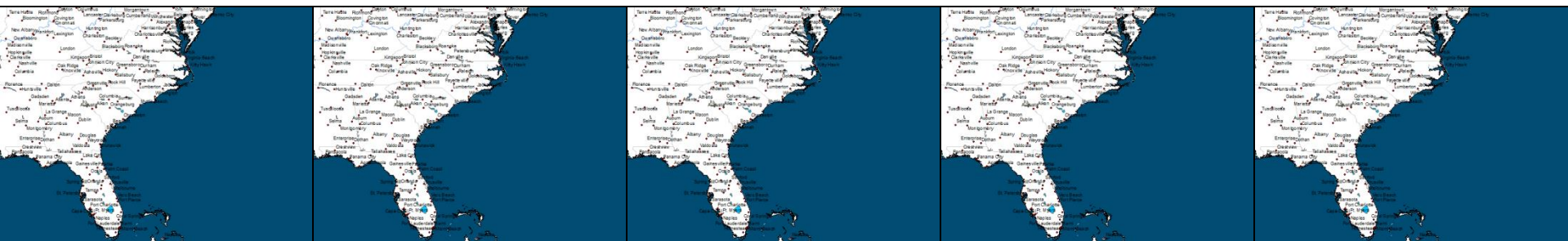
Max Wind Speed



Hours Above Threshold



Tropical Storm (> 35 kts)

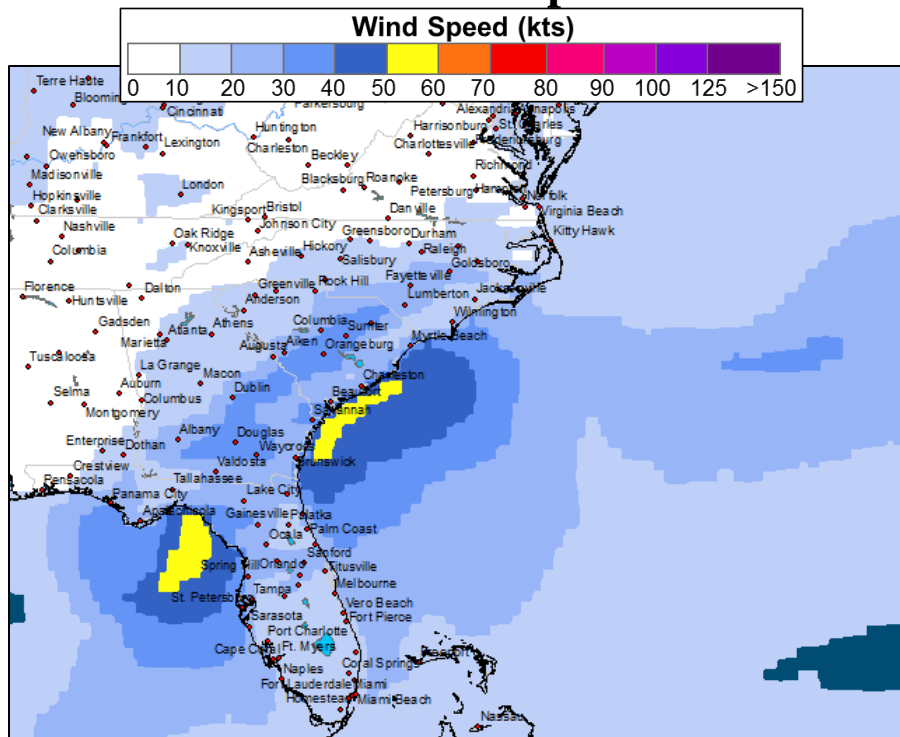


Florida/GA/SC: TS Hermine Day 2 Wind Forecast

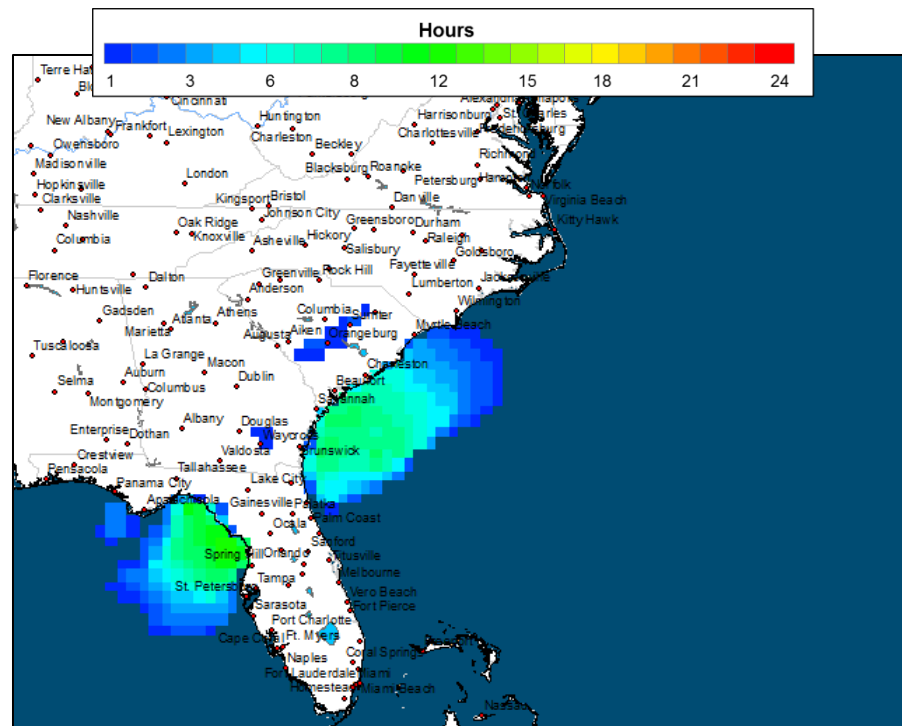
September 3, 2016

Source: NOAA GFS Wind forecast

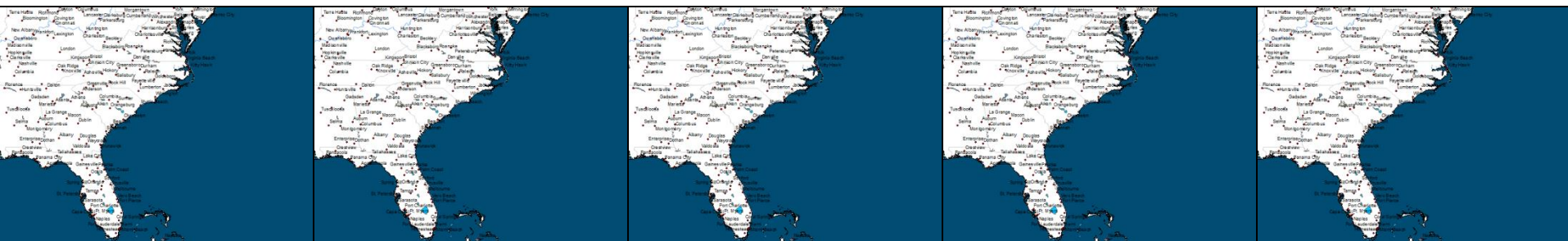
Max Wind Speed



Hours Above Threshold



Tropical Storm (> 35 kts)



CAT 1
(> 64 kts)

CAT 2
(> 83 kts)

CAT 3
(> 96 kts)

CAT 4
(> 114 kts)

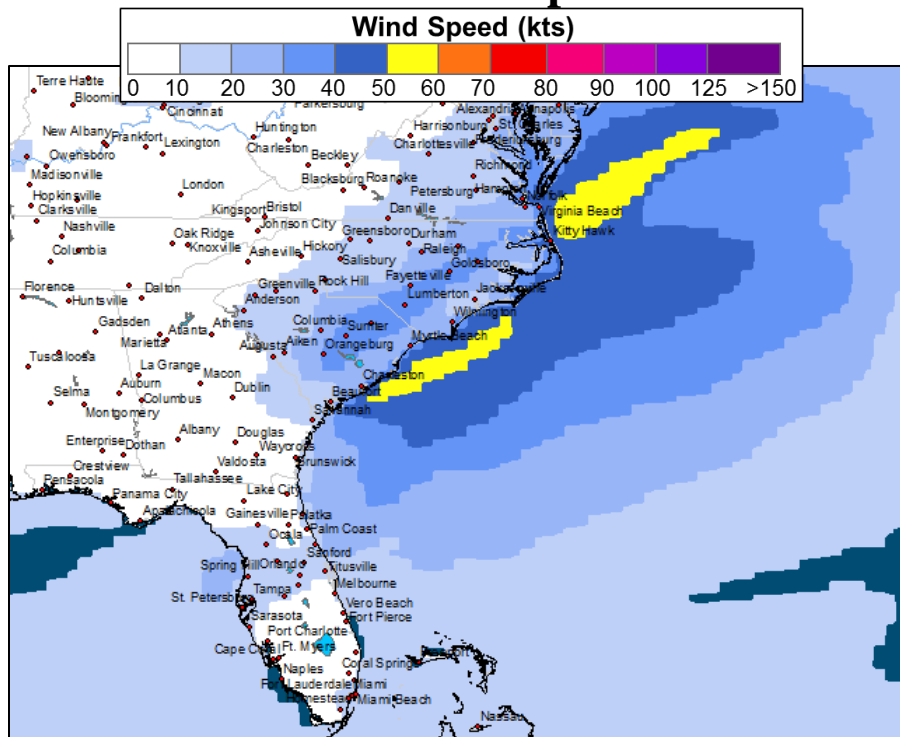
CAT 5
(> 135 kts)

Florida/GA/SC: TS Hermine Day 3 Wind Forecast

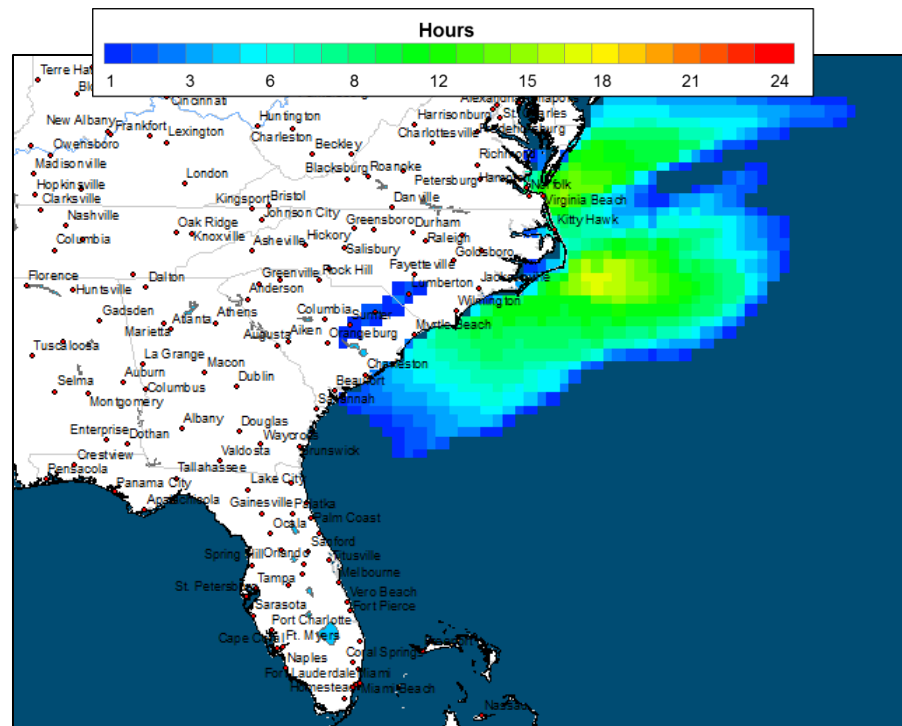
September 4, 2016

Source: NOAA GFS Wind forecast

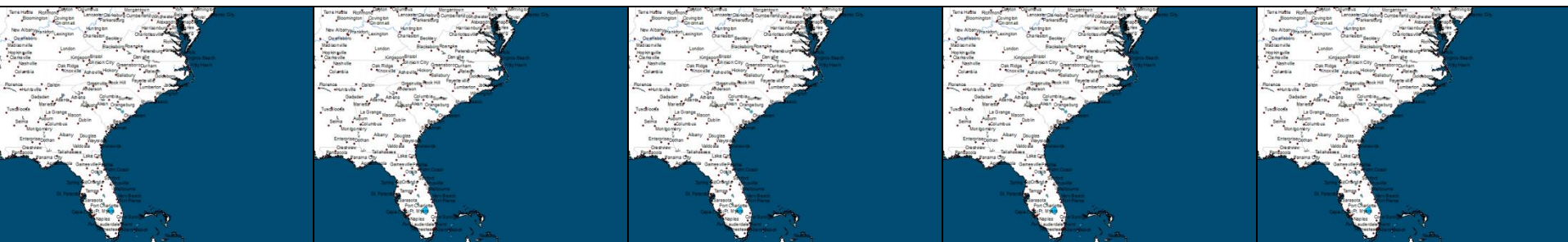
Max Wind Speed



Hours Above Threshold



Tropical Storm (> 35 kts)



CAT 1
(> 64 kts)

CAT 2
(> 83 kts)

CAT 3
(> 96 kts)

CAT 4
(> 114 kts)

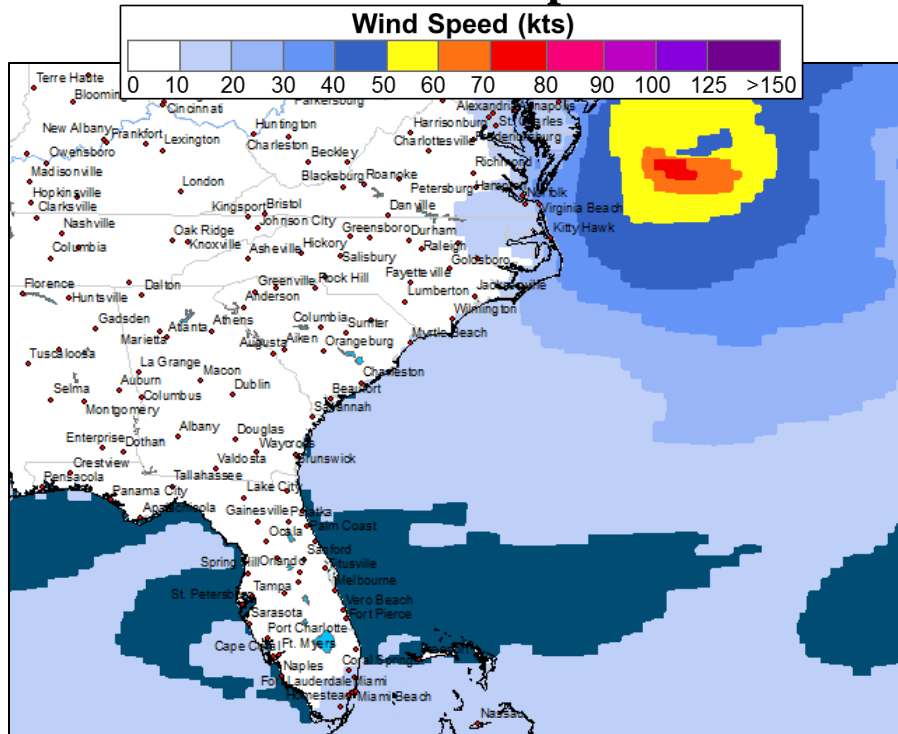
CAT 5
(> 135 kts)

Florida/GA/SC: TS Hermine Day 4 Wind Forecast

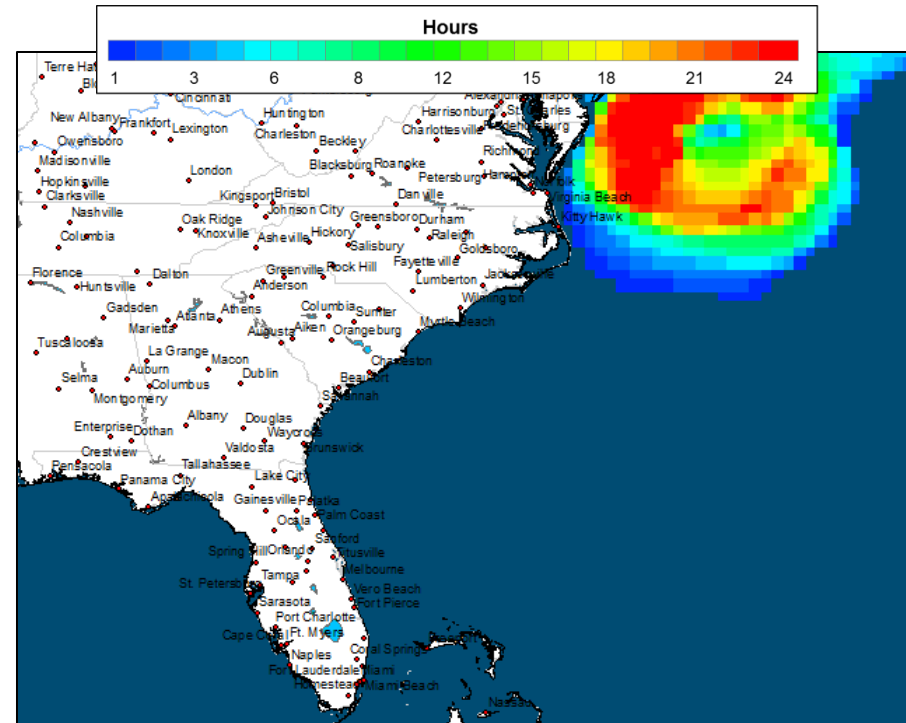
September 5, 2016

Source: NOAA GFS Wind forecast

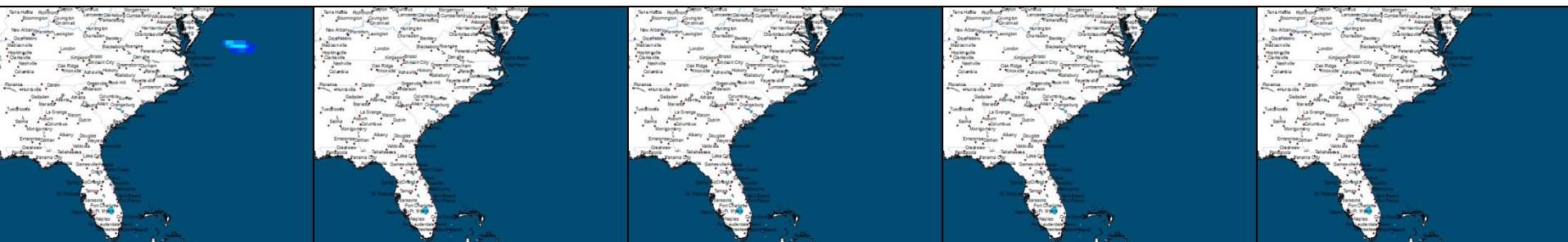
Max Wind Speed



Hours Above Threshold



Tropical Storm (> 35 kts)



CAT 1
(> 64 kts)

CAT 2
(> 83 kts)

CAT 3
(> 96 kts)

CAT 4
(> 114 kts)

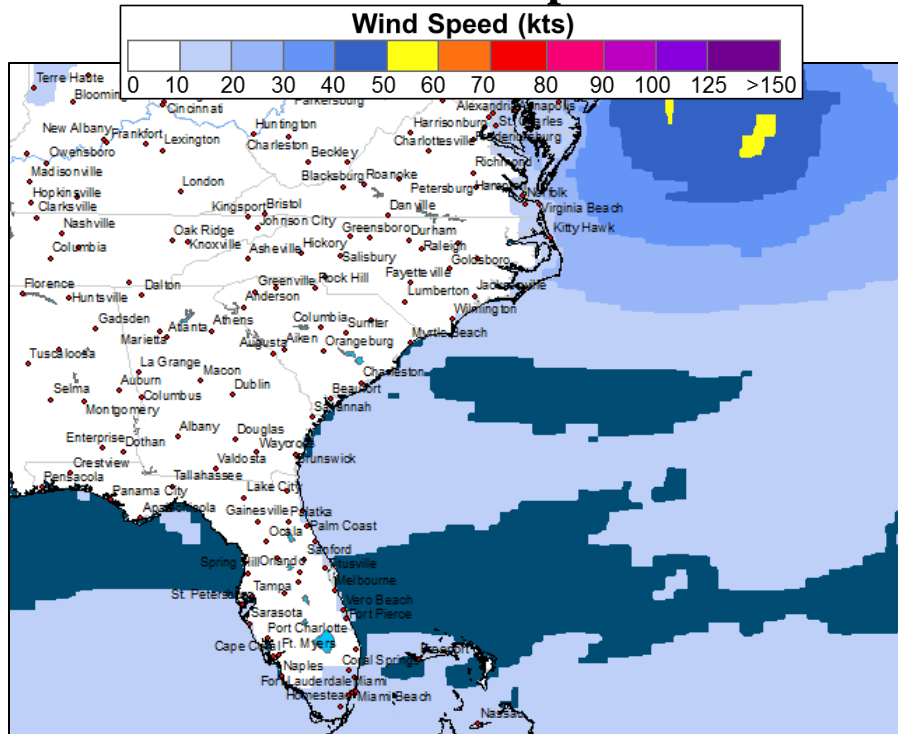
CAT 5
(> 135 kts)

Florida/GA/SC: TS Hermine Day 5 Wind Forecast

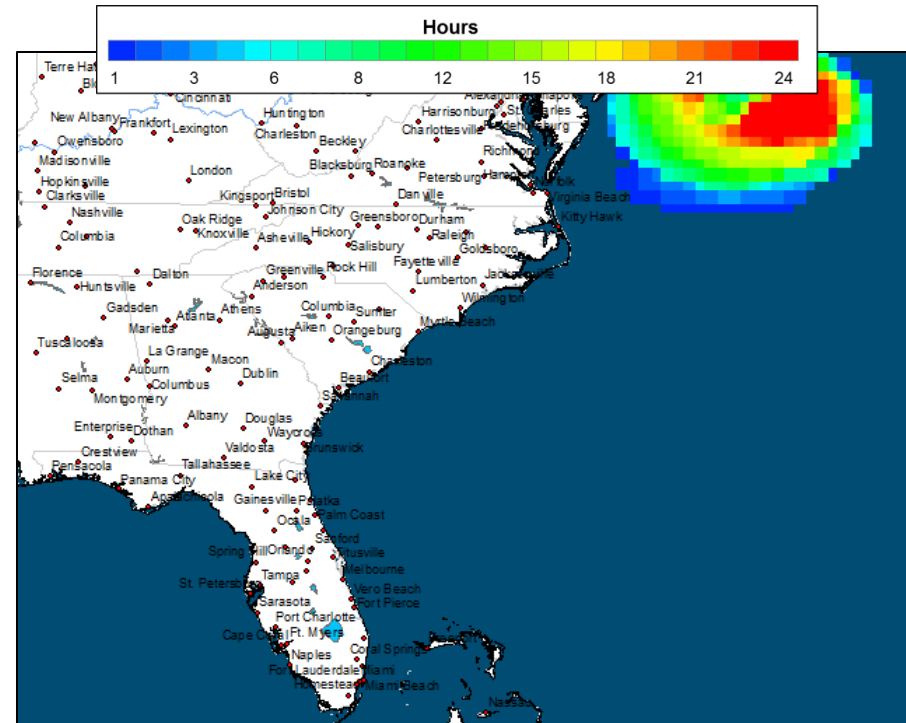
September 6, 2016

Source: NOAA GFS Wind forecast

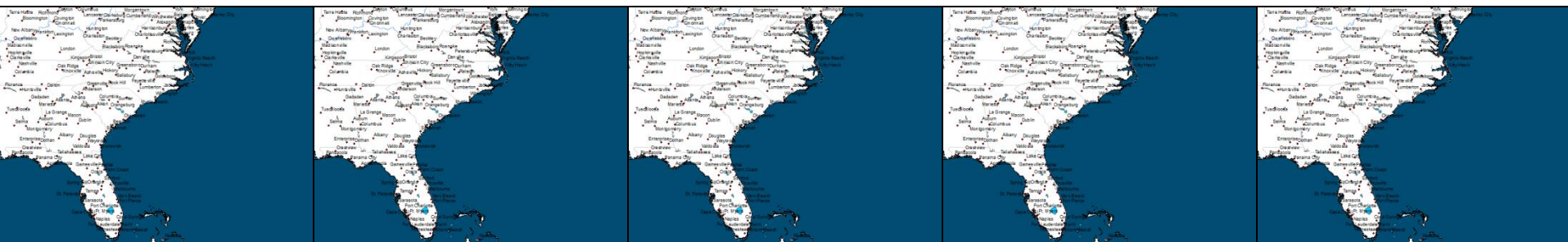
Max Wind Speed



Hours Above Threshold



Tropical Storm (> 35 kts)



CAT 1

(> 64 kts)

CAT 2

(> 83 kts)

CAT 3

(> 96 kts)

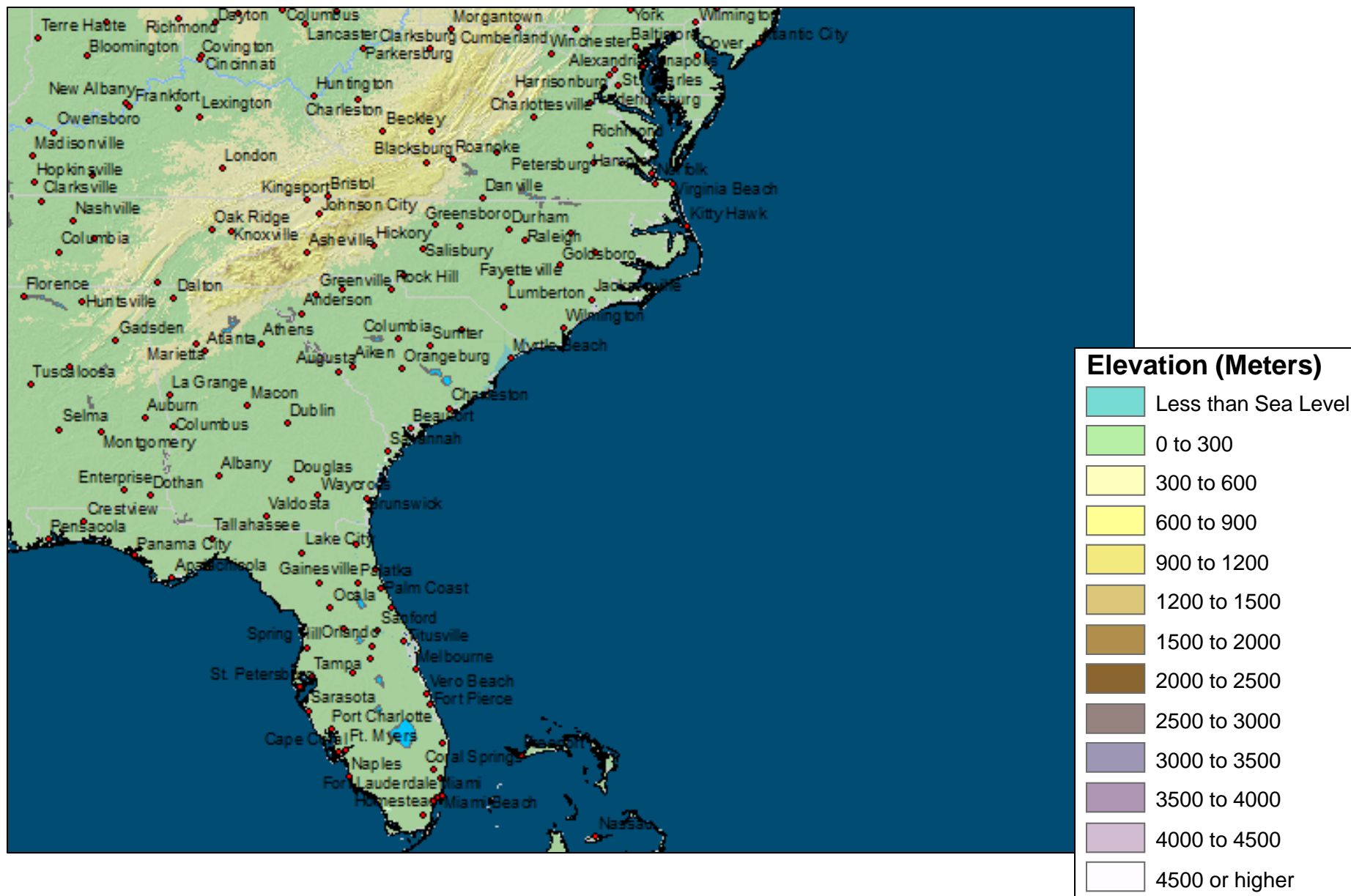
CAT 4

(> 114 kts)

CAT 5

(> 135 kts)

Florida/GA/SC: Elevation



Hurricane Category: Classification Based on Winds; Probable Damage Estimate

Saffir-Simpson Scale For Hurricane Classification				
Strength	Wind Speed (Kts)	Wind Speed (MPH)	Pressure (Millibars)	Damage
Category 1	64-82 kts	74-95 mph	> 980 mb	Very dangerous winds. Will produce some damage
Category 2	83-95 kts	96-110 mph	965-979 mb	Extremely dangerous winds. Will cause extensive damage.
Category 3	96-113 kts	111-130 mph	945-964 mb	Devastating damage will occur.
Category 4	114-135 kts	131-155 mph	920-944 mb	Catastrophic damage will occur.
Category 5	> 135 kts	> 155 mph	919 mb	Catastrophic damage will occur.
Tropical Cyclone Classification				
Tropical Depression		20-34 kts		
Tropical Storm		35-63 kts		
Hurricane		64+ kts or 74+ mph		