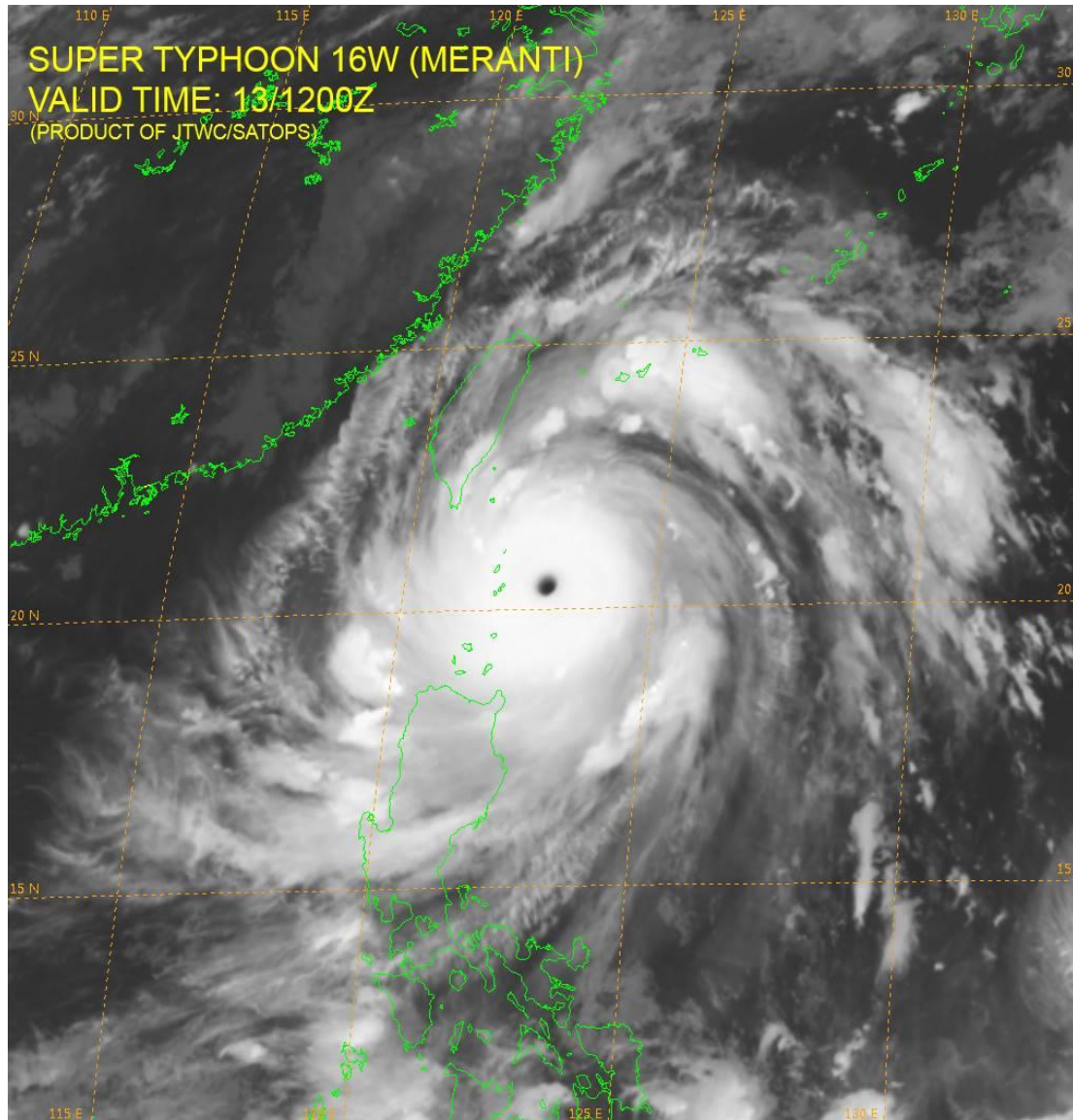


# China: Super Typhoon Meranti

September 13, 2016

Source: Joint Typhoon Warning Center



Super Typhoon Meranti is a well organized CAT 5 system. Surface winds are 160 Kts with gust to 195 KTs. Super Typhoon Meranti has tracked to the west at 14 KT's the past six hours.

Super Typhoon Meranti is expected to continue on its current track just south of Taiwan across the Luzon Strait. Meranti is expected to brush the southern coast of Taiwan (gradually weakening the system). After crossing the Taiwan straight as a weaker system JTWC forecasts landfall over mainland China near Shantou by around Sep 14/21Z. The system is expected to gradually weaken over the next 12 to 36 hours. The current forecast indicates CAT 2 winds across far southern Taiwan with the current forecast track. By the time Meranti reaches the coast of China winds are expected to have weakened to around 80 kts (strong CAT 1). There is high confidence in the forecast track up to landfall in China.

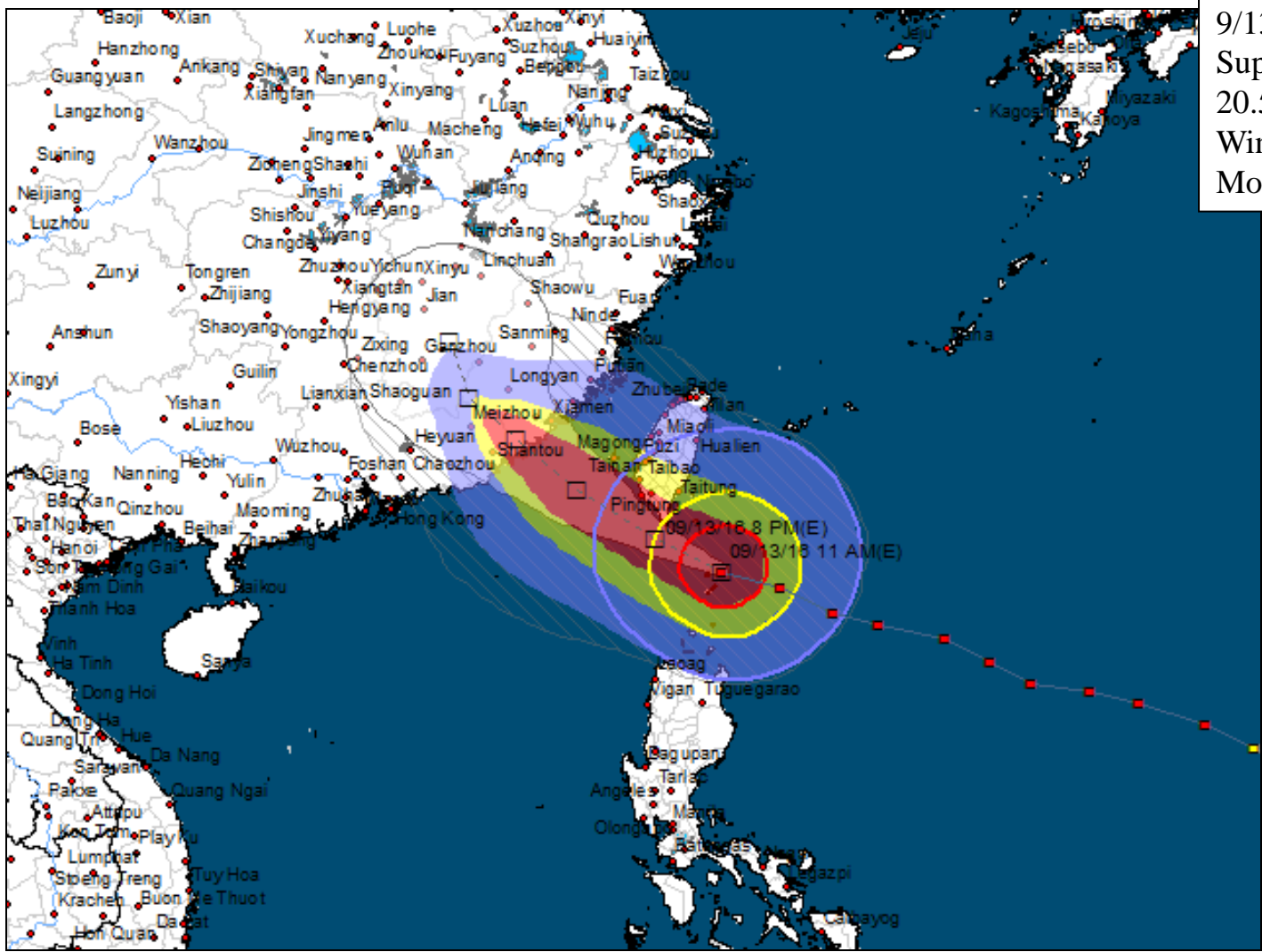
Precipitation is expected to be torrential. Across far eastern and southern Taiwan and across the far eastern/southeastern portion of the Fujian province, heavy to torrential precipitation is expected with extreme flooding and landslides combined with high winds.

# China: Super Typhoon Meranti Forecast Track

September 13, 2016

Source: Joint Typhoon Warning Center

Latest Advisory 020  
9/13/2016 (1200z)  
Super Typhoon Meranti  
20.5N 122.7E  
Wind Speed 160kt gust 195kt  
Movement 280° at 14 kt

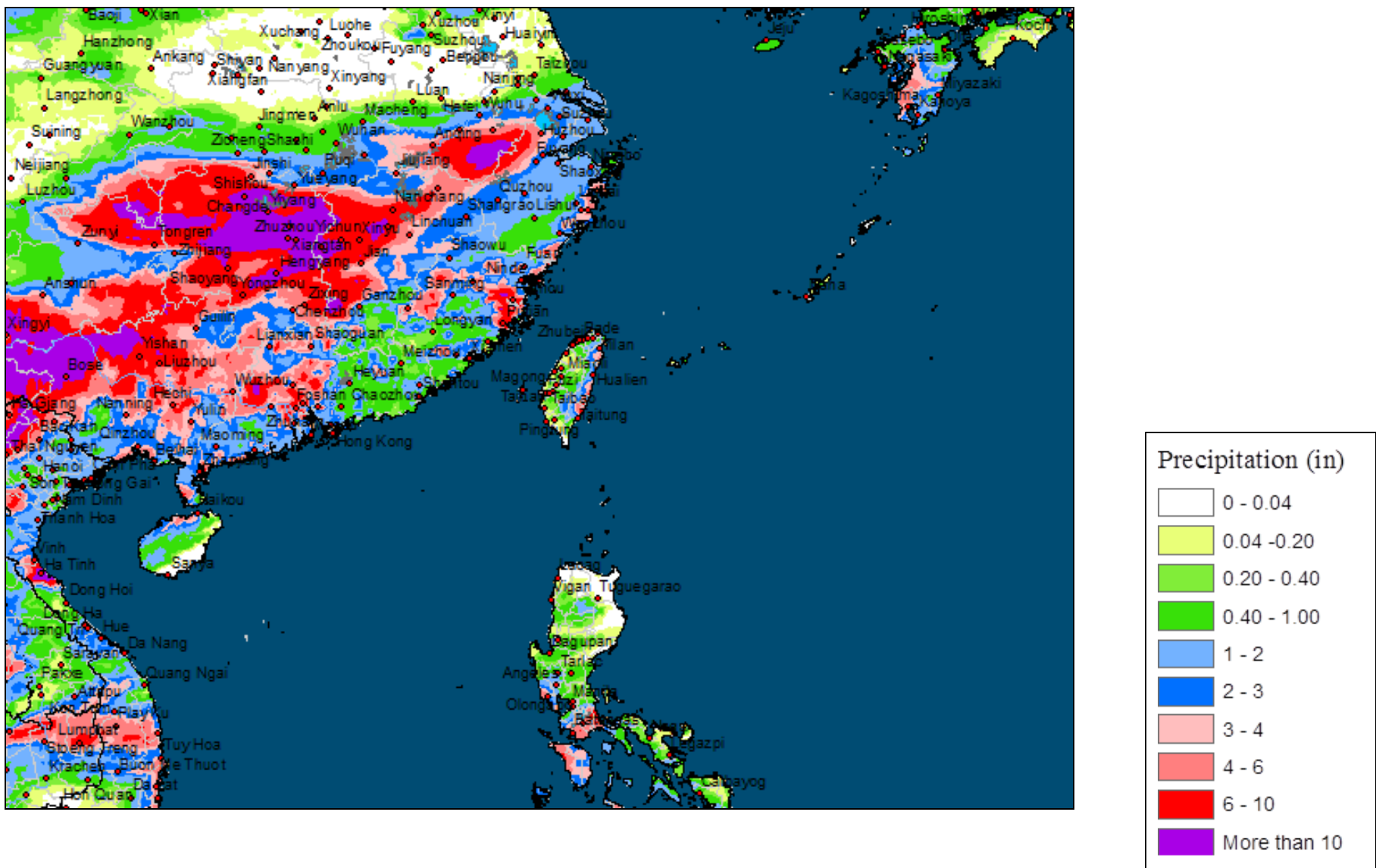


- >34kts(39mph)
- >50kts(58mph)
- >64kts(74mph)

# China: Super Typhoon Meranti 3 Day Cumulative Precip

## September 10, 2016 through September 12, 2016

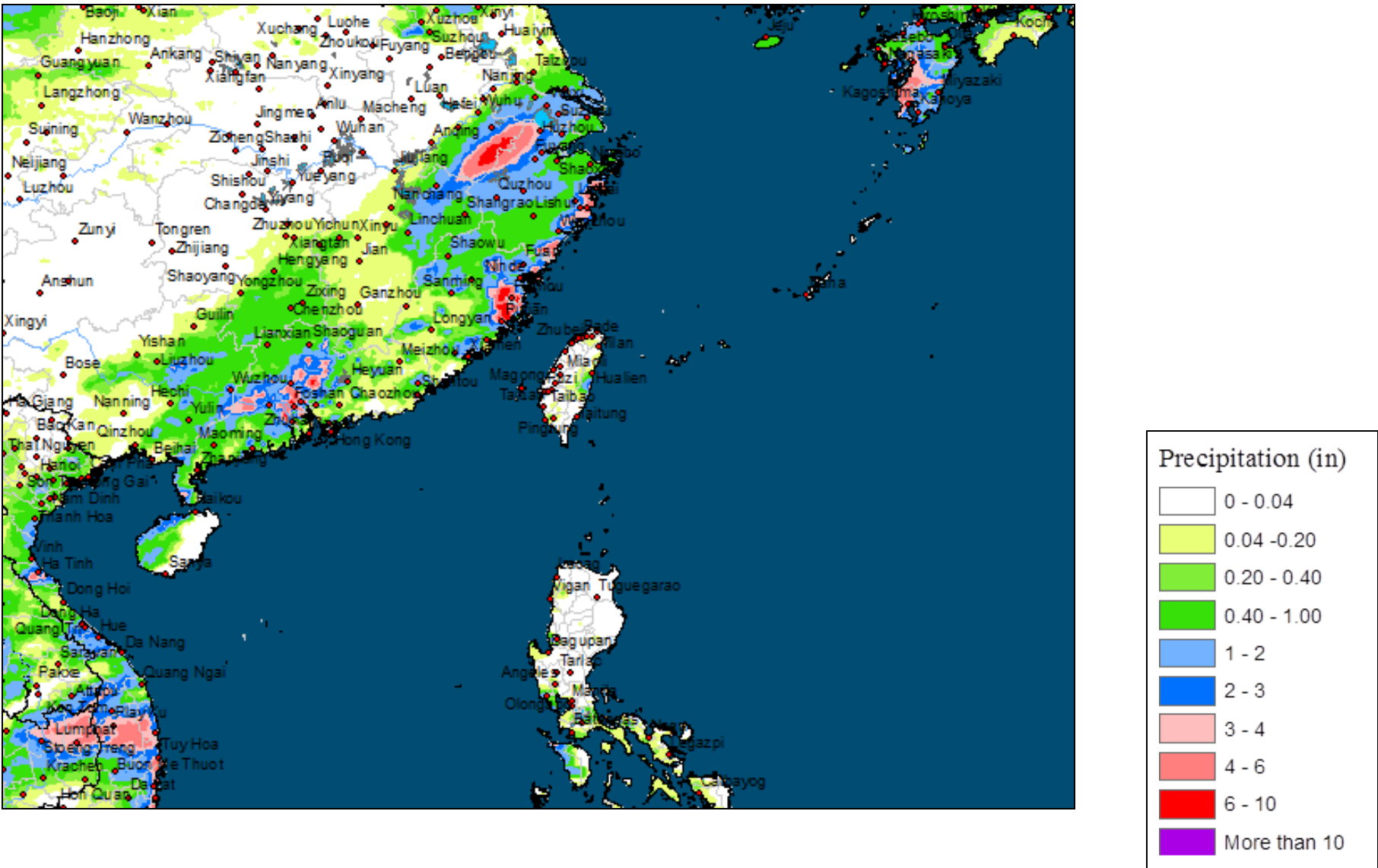
Source: Global Precipitation Measurement Data



# China: Super Typhoon Meranti Current Precipitation

## September 12, 2016

Source: Global Precipitation Measurement Data



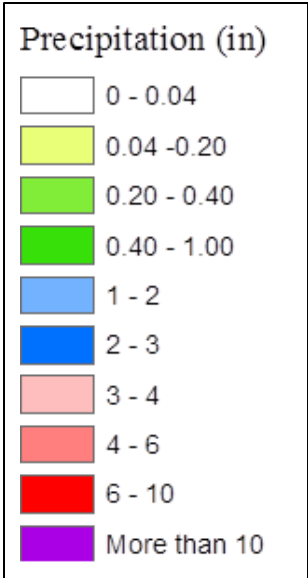
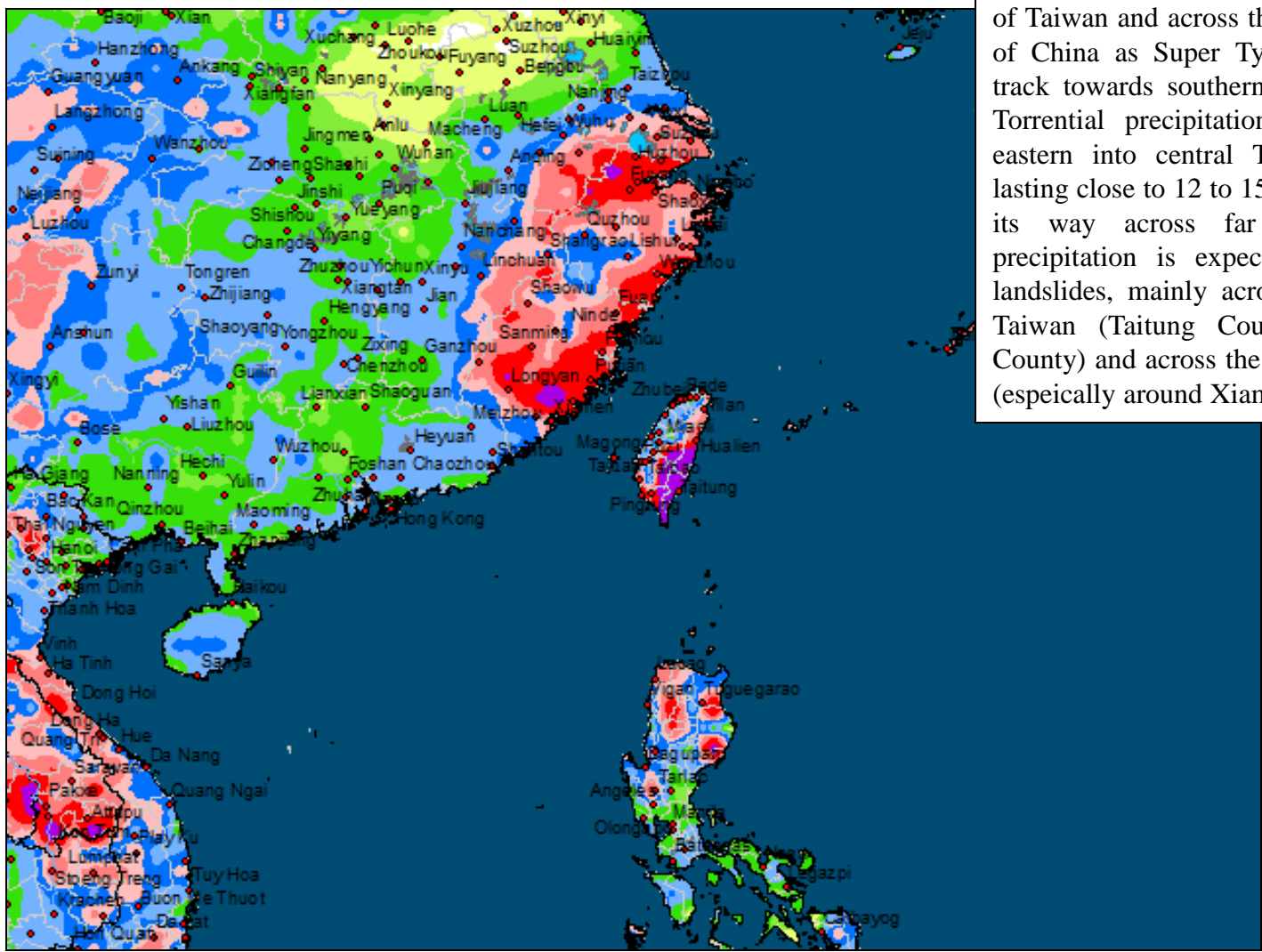


# China: Super Typhoon Meranti Forecast 7 Day Precipitation

September 13, 2016 through September 19, 2016

Source: Global Forecast System Data

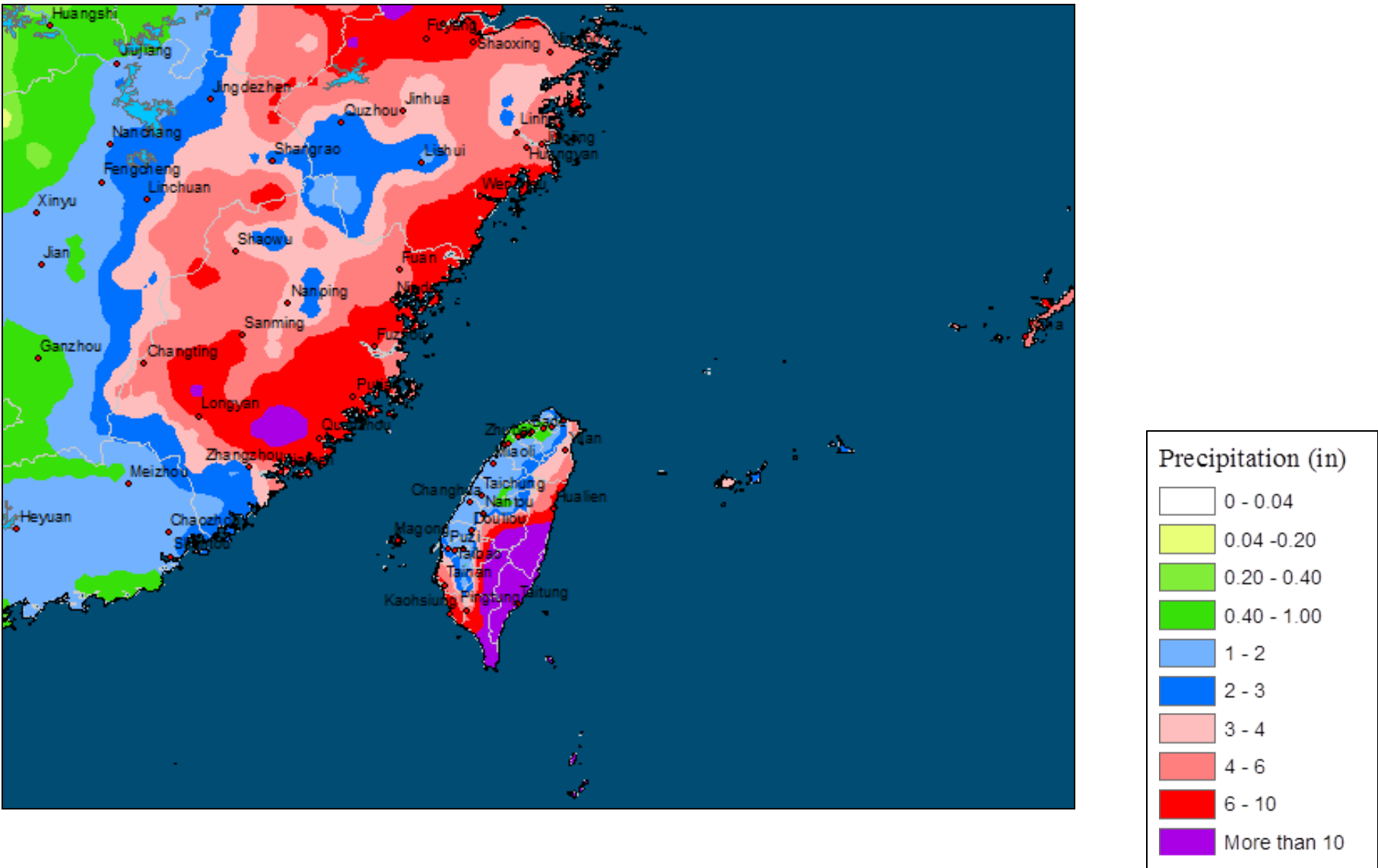
Heavy precipitation – between 12 and 16 inches – is possible across favored mountain and coastal regions of Taiwan and across the far eastern Fujian province of China as Super Typhoon Meranti continues to track towards southern Taiwan the next few days. Torrential precipitation rates are possible across eastern into central Taiwan starting Sep 13/21Z lasting close to 12 to 15 hours as the Typhoon makes its way across far southern Taiwan. The precipitation is expected to create flooding and landslides, mainly across far eastern into southern Taiwan (Taitung County, and southern Hualien County) and across the far eastern portions of China (especially around Xiamen, China)



# China: Super Typhoon Meranti Forecast 7 Day Precipitation

September 13, 2016 through September 19, 2016

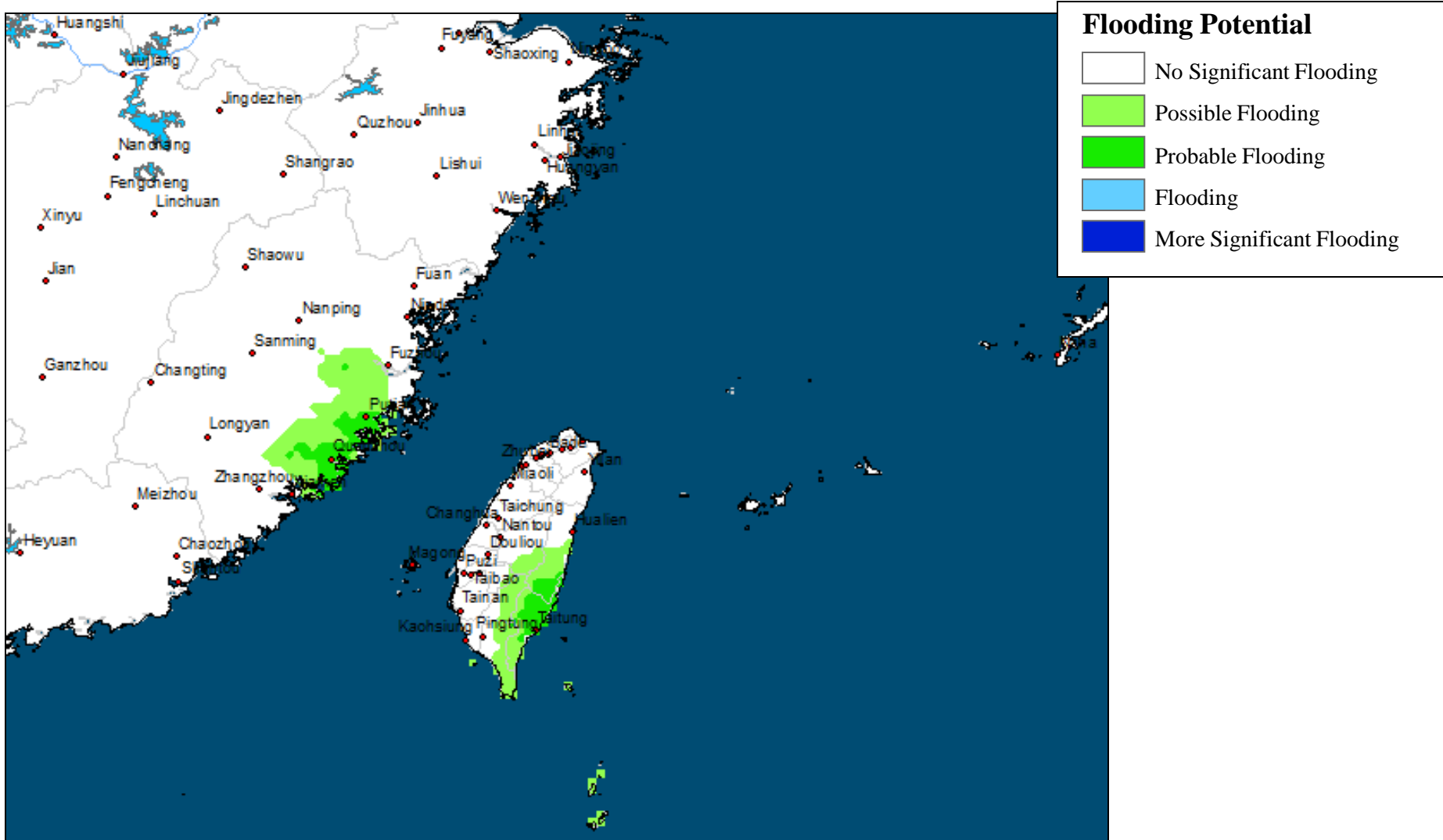
Source: Global Forecast System Data



# China: Super Typhoon Meranti Initial Flood Potential Map

September 13, 2016

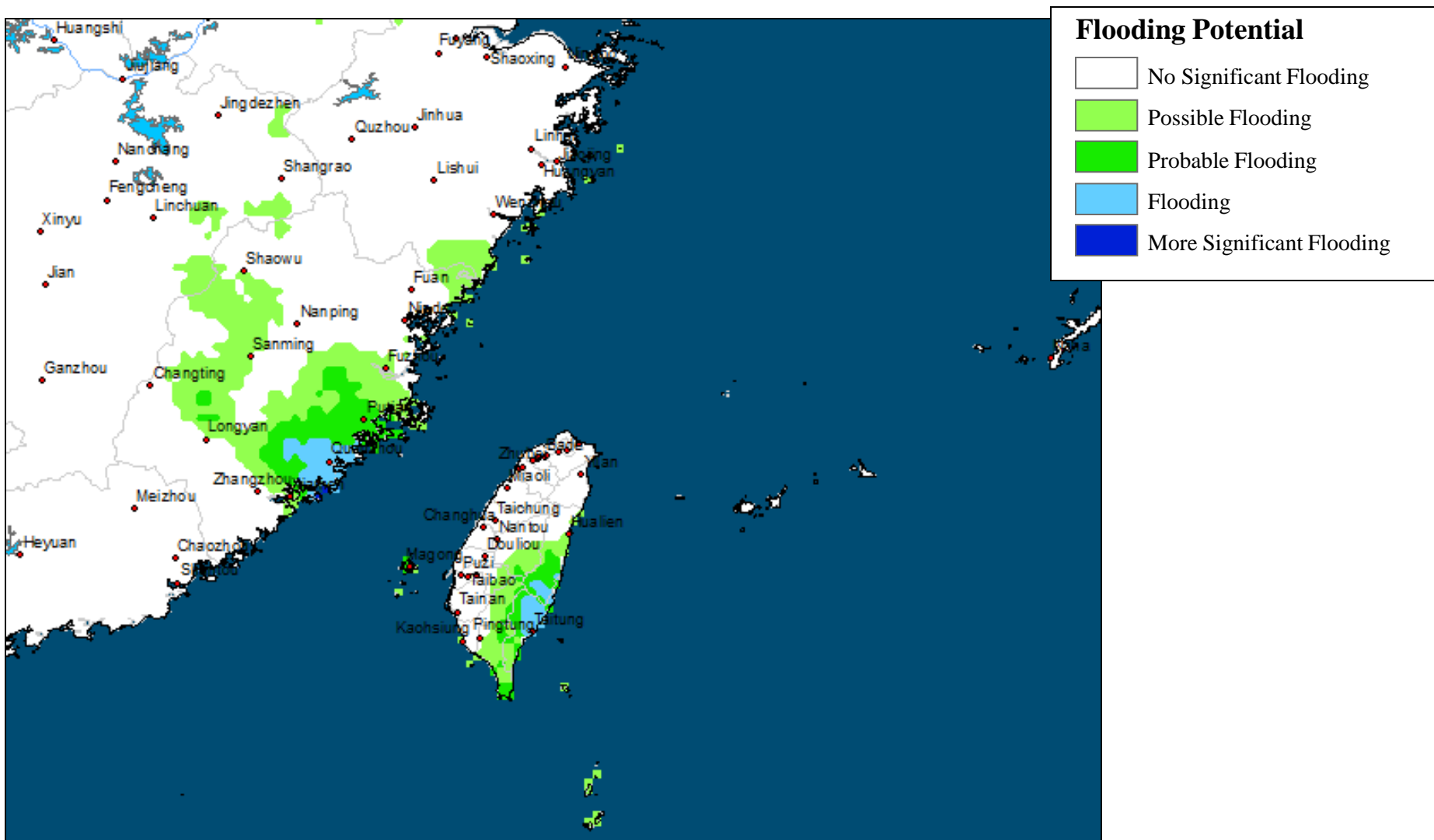
Source: Satellite Derived Precipitation and NOAA GFS Precipitation forecast



# China: Super Typhoon Meranti Day 1 Flood Potential Map

September 14, 2016

Source: Satellite Derived Precipitation and NOAA GFS Precipitation forecast

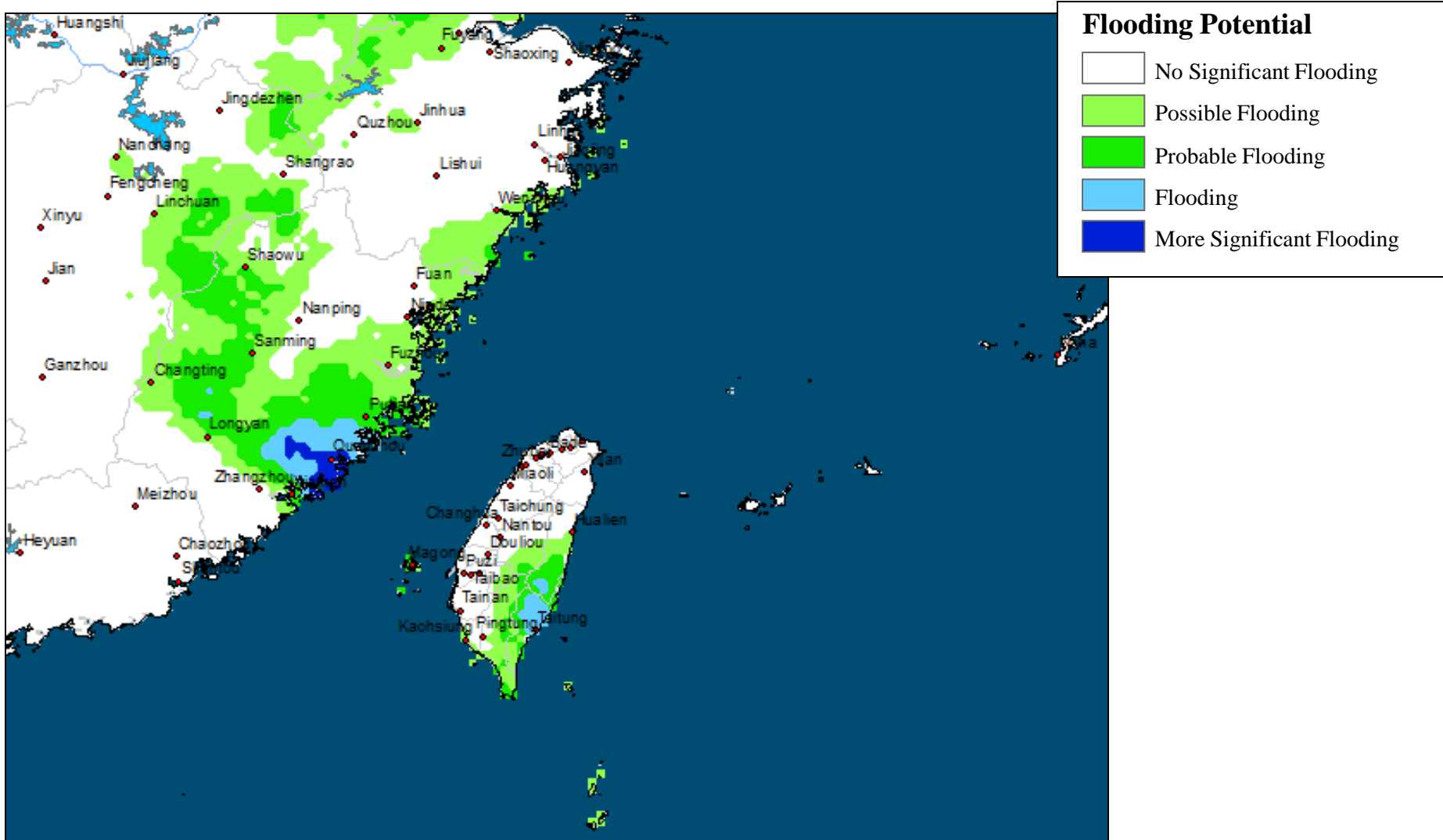




# China: Super Typhoon Meranti Day 2 Flood Potential Map

September 15, 2016

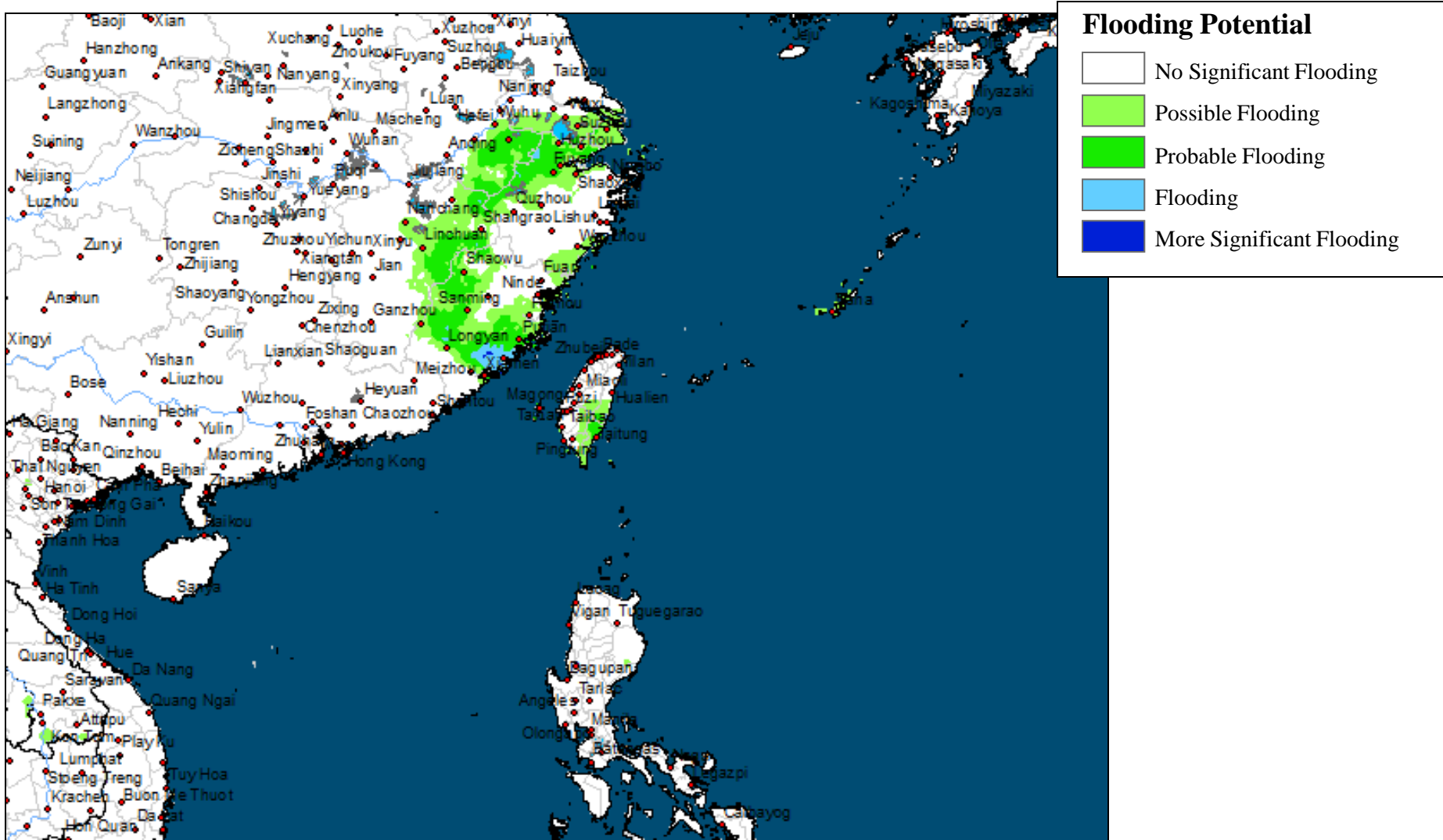
Source: Satellite Derived Precipitation and NOAA GFS Precipitation forecast



# China: Super Typhoon Meranti Day 3 Flood Potential Map

September 16, 2016

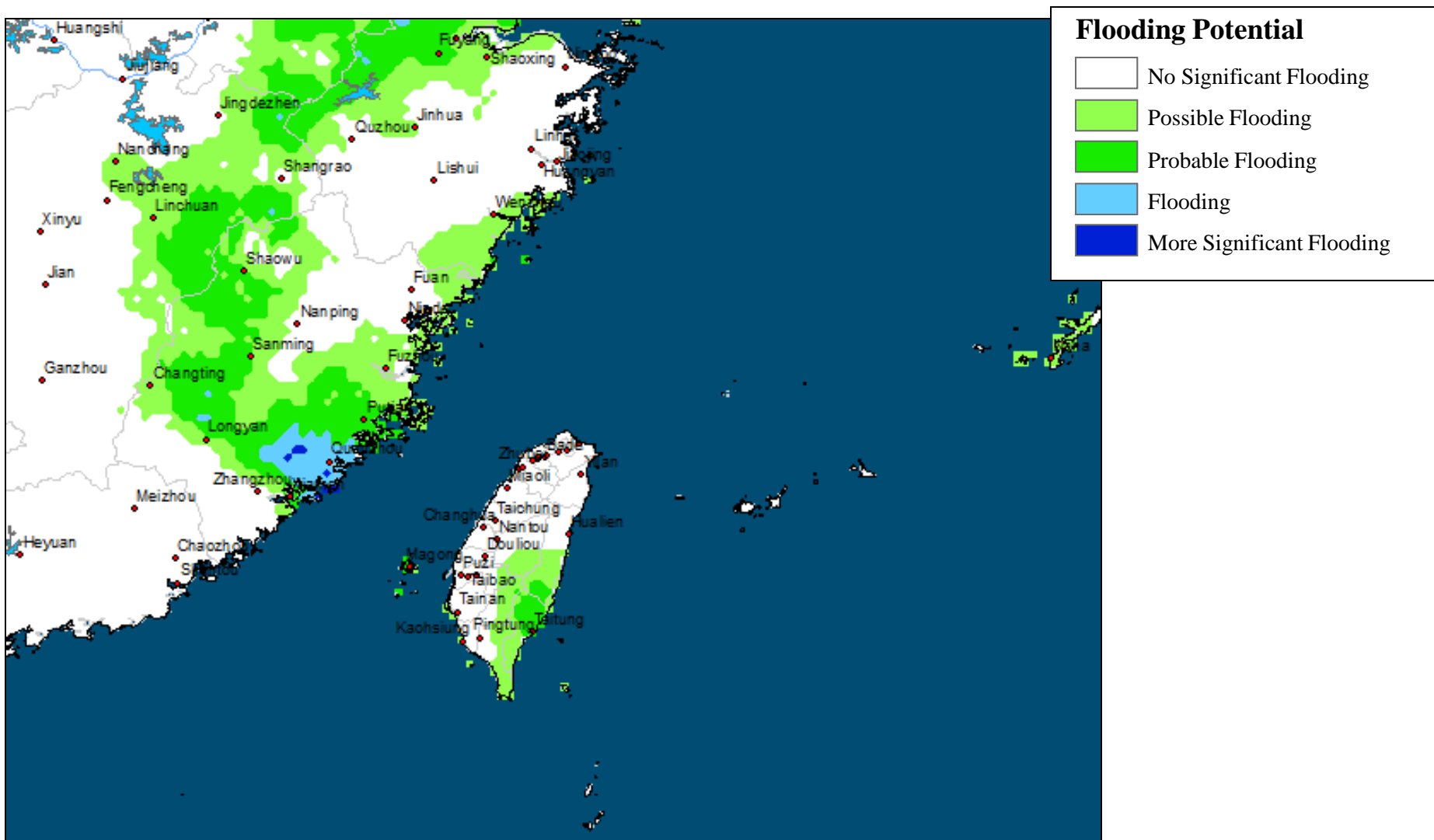
Source: Satellite Derived Precipitation and NOAA GFS Precipitation forecast



# China: Super Typhoon Meranti Day 3 Flood Potential Map

September 16, 2016

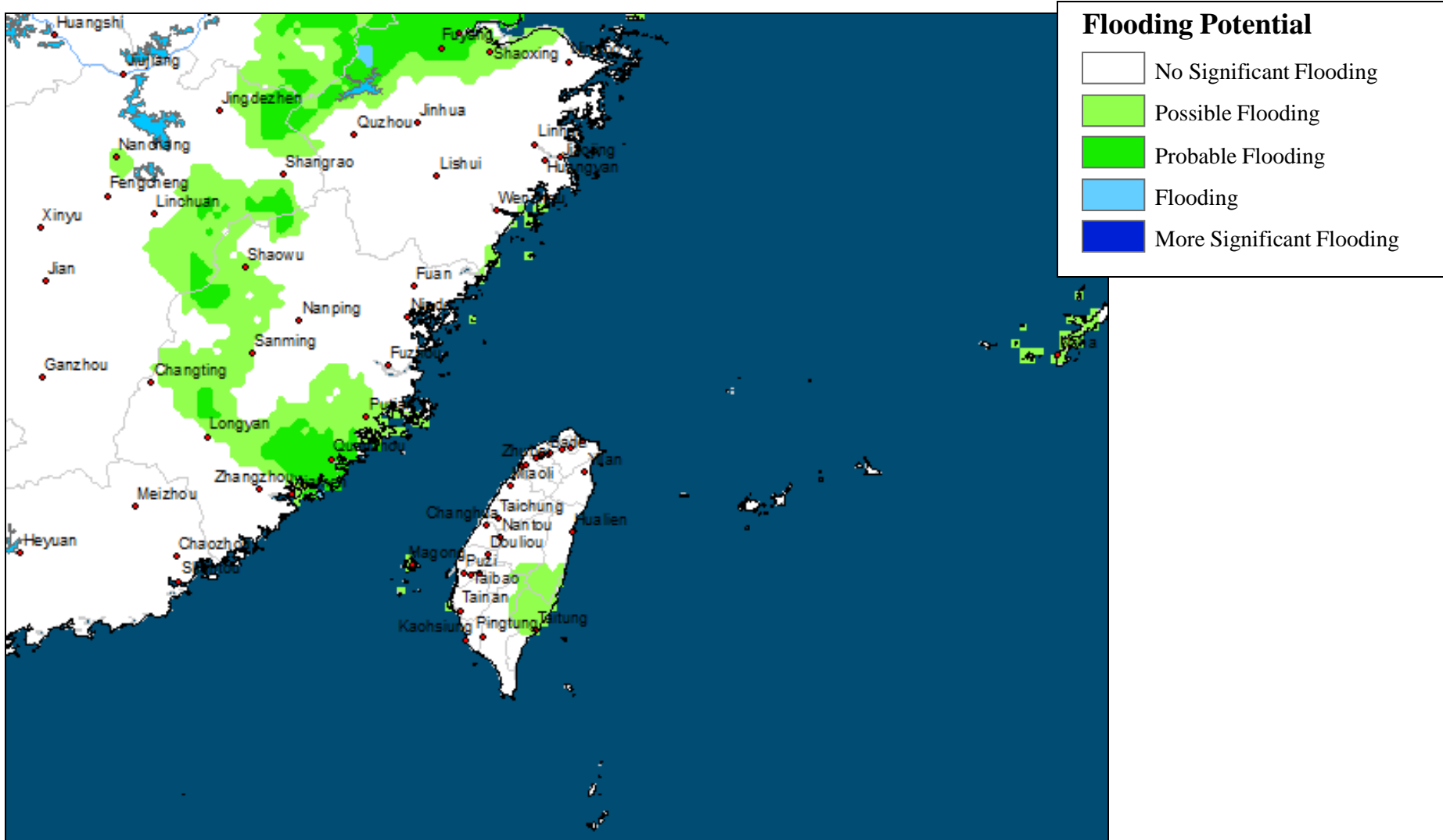
Source: Satellite Derived Precipitation and NOAA GFS Precipitation forecast



# China: Super Typhoon Meranti Day 4 Flood Potential Map

September 17, 2016

Source: Satellite Derived Precipitation and NOAA GFS Precipitation forecast

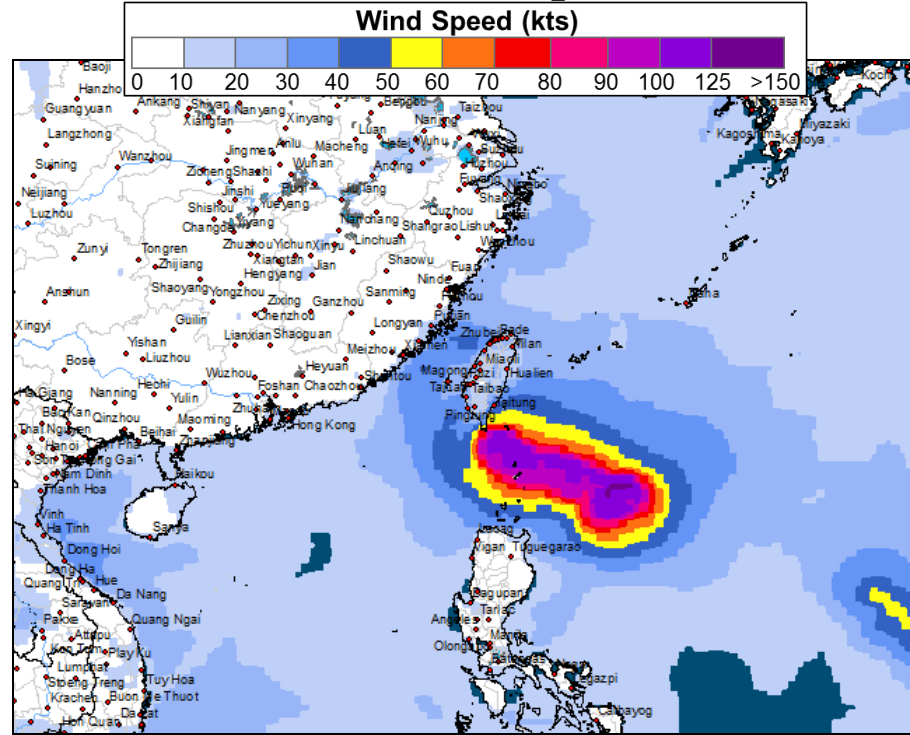


# China: Super Typhoon Meranti Day 1 Wind Forecast

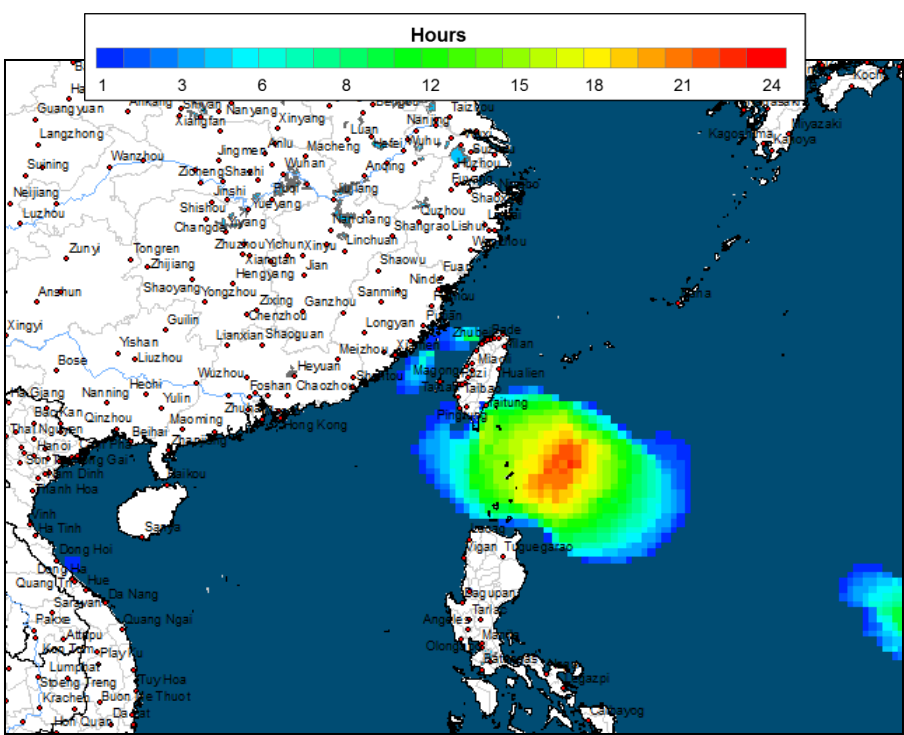
## September 14, 2016

Source: NOAA GFS Wind forecast

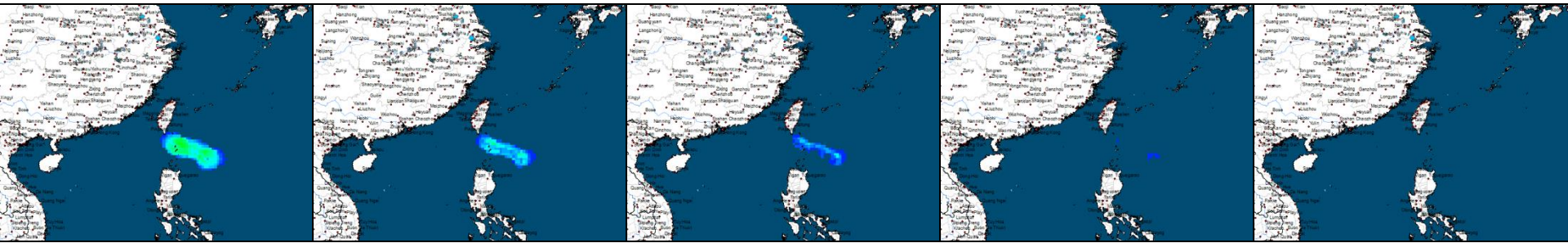
Max Wind Speed



Hours Above Threshold



Tropical Storm ( > 35 kts)



CAT 1  
( > 64 kts)

CAT 2  
( > 83 kts)

CAT 3  
( > 96 kts)

CAT 4  
( > 114 kts)

CAT 5  
( > 135 kts)

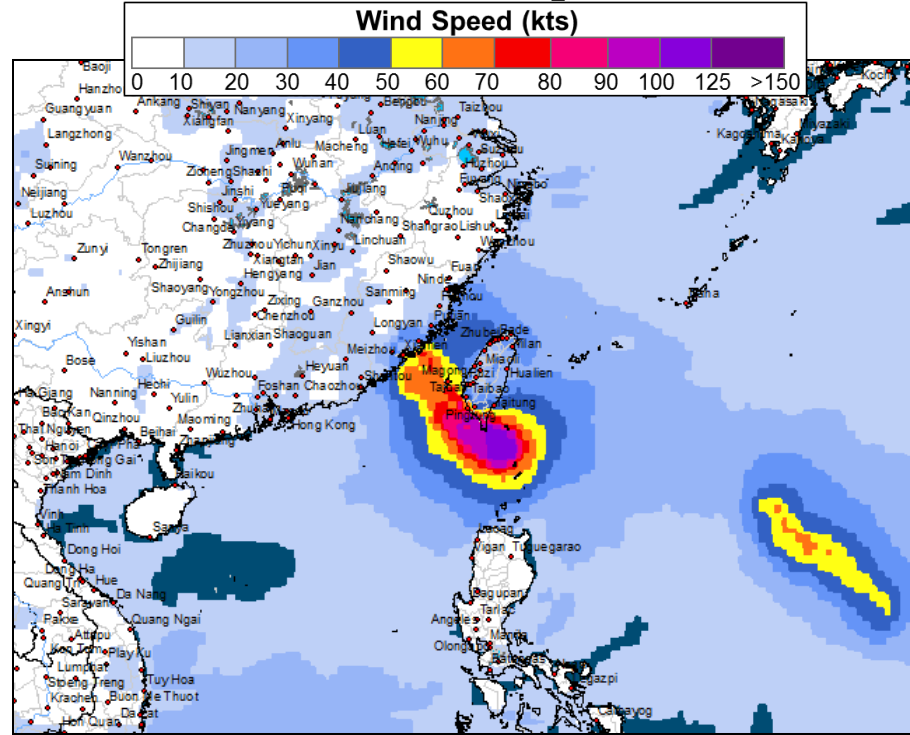


# China: Super Typhoon Meranti Day 2 Wind Forecast

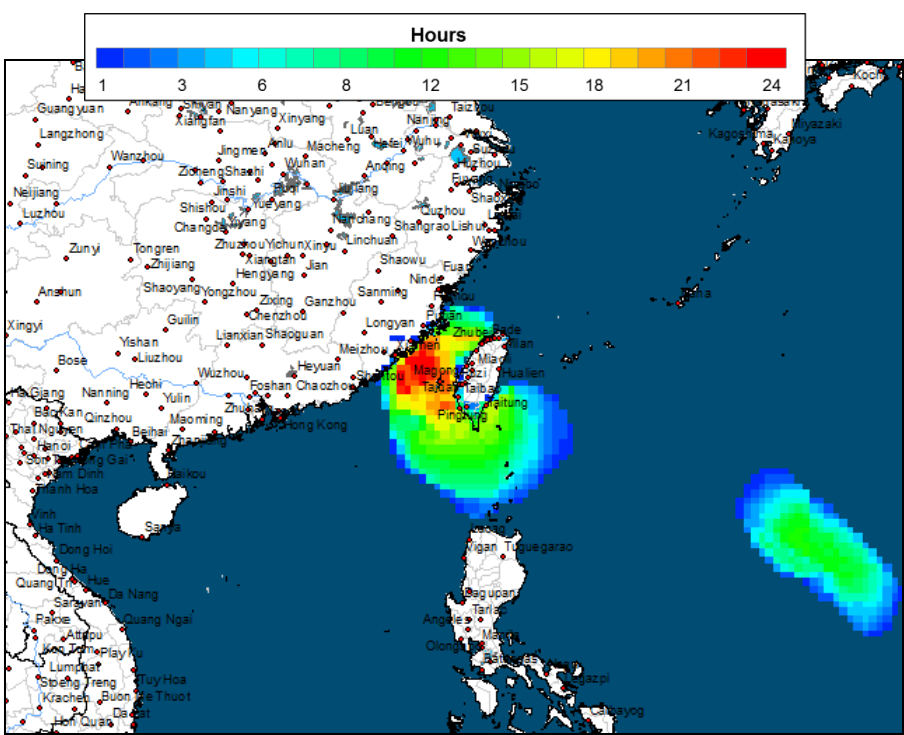
## September 15, 2016

Source: NOAA GFS Wind forecast

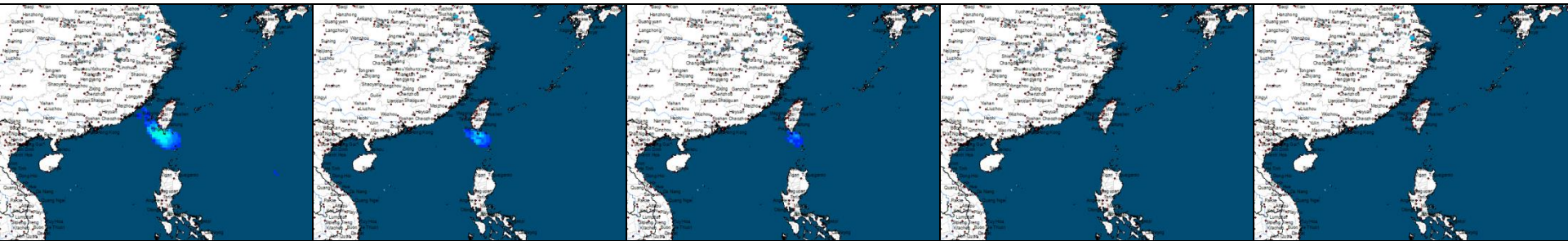
Max Wind Speed



Hours Above Threshold



Tropical Storm ( > 35 kts)



CAT 1  
( > 64 kts)

CAT 2  
( > 83 kts)

CAT 3  
( > 96 kts)

CAT 4  
( > 114 kts)

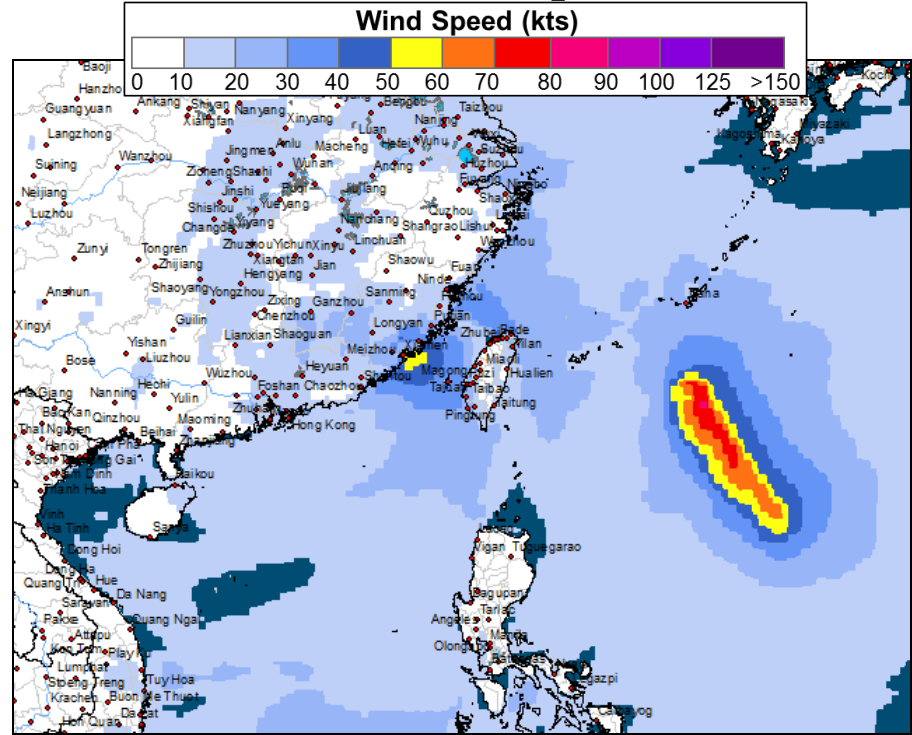
CAT 5  
( > 135 kts)

# China: Super Typhoon Meranti Day 3 Wind Forecast

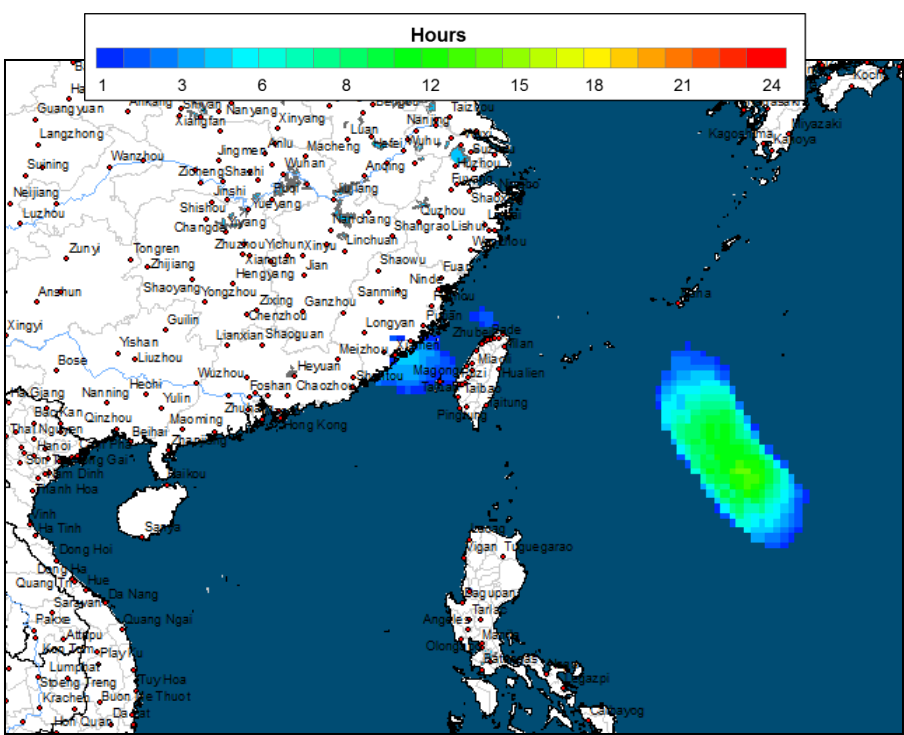
## September 16, 2016

Source: NOAA GFS Wind forecast

Max Wind Speed



Hours Above Threshold



Tropical Storm ( > 35 kts)



CAT 1  
( > 64 kts)

CAT 2  
( > 83 kts)

CAT 3  
( > 96 kts)

CAT 4  
( > 114 kts)

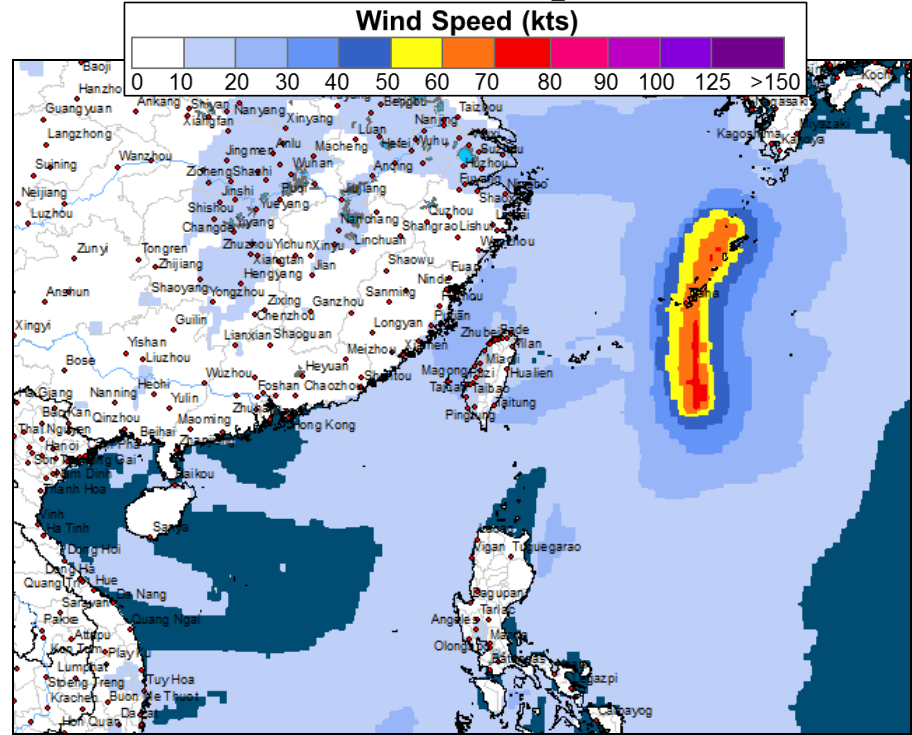
CAT 5  
( > 135 kts)

# China: Super Typhoon Meranti Day 4 Wind Forecast

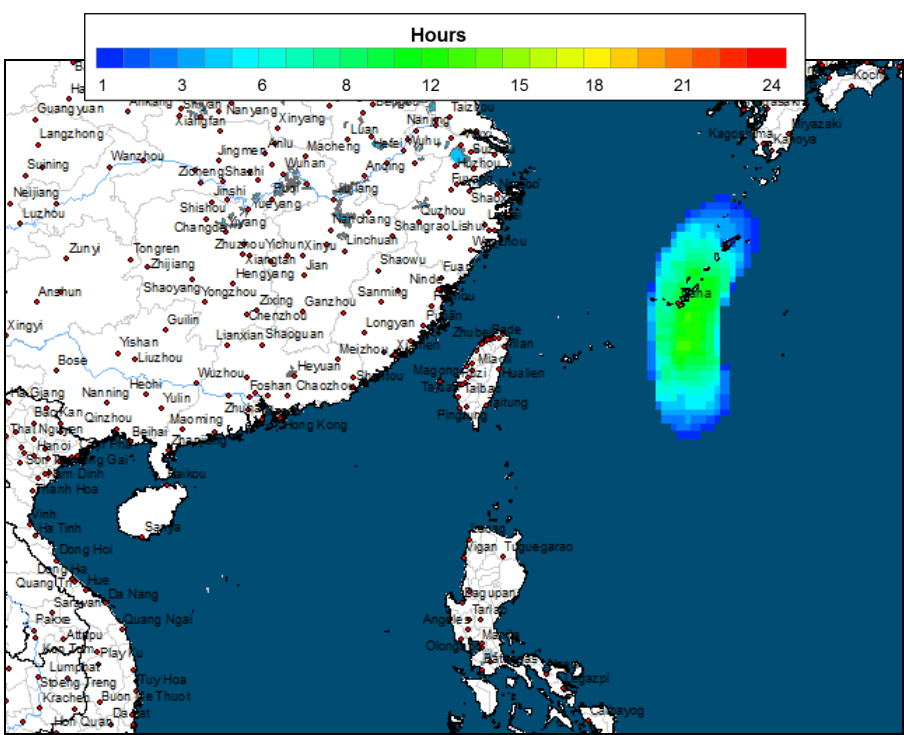
## September 17, 2016

Source: NOAA GFS Wind forecast

Max Wind Speed



Hours Above Threshold



Tropical Storm ( > 35 kts)



CAT 1  
( > 64 kts)

CAT 2  
( > 83 kts)

CAT 3  
( > 96 kts)

CAT 4  
( > 114 kts)

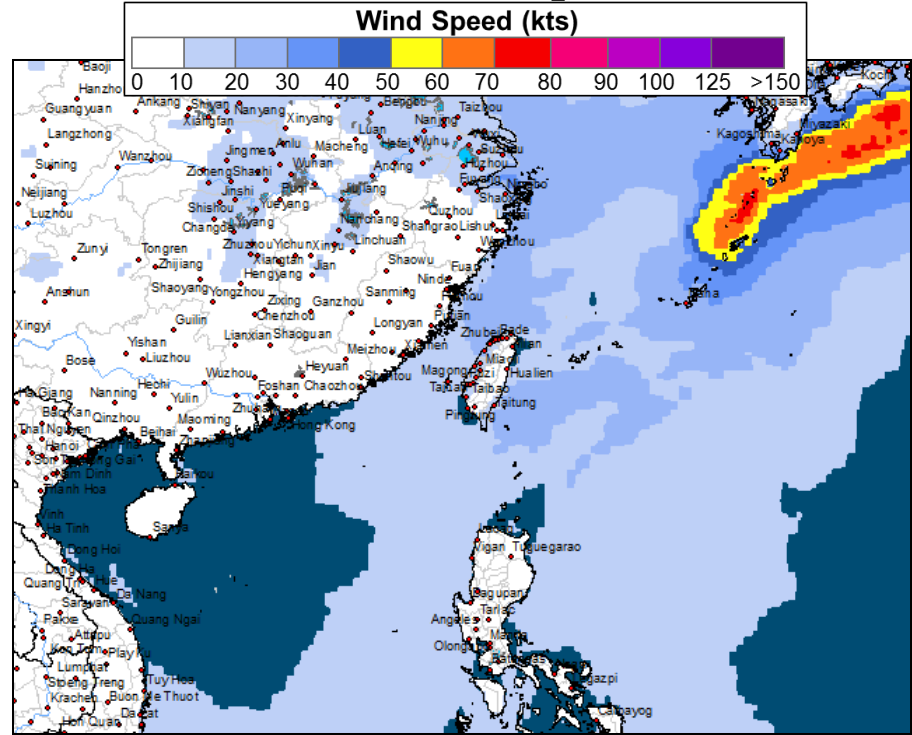
CAT 5  
( > 135 kts)

# China: Super Typhoon Meranti Day 5 Wind Forecast

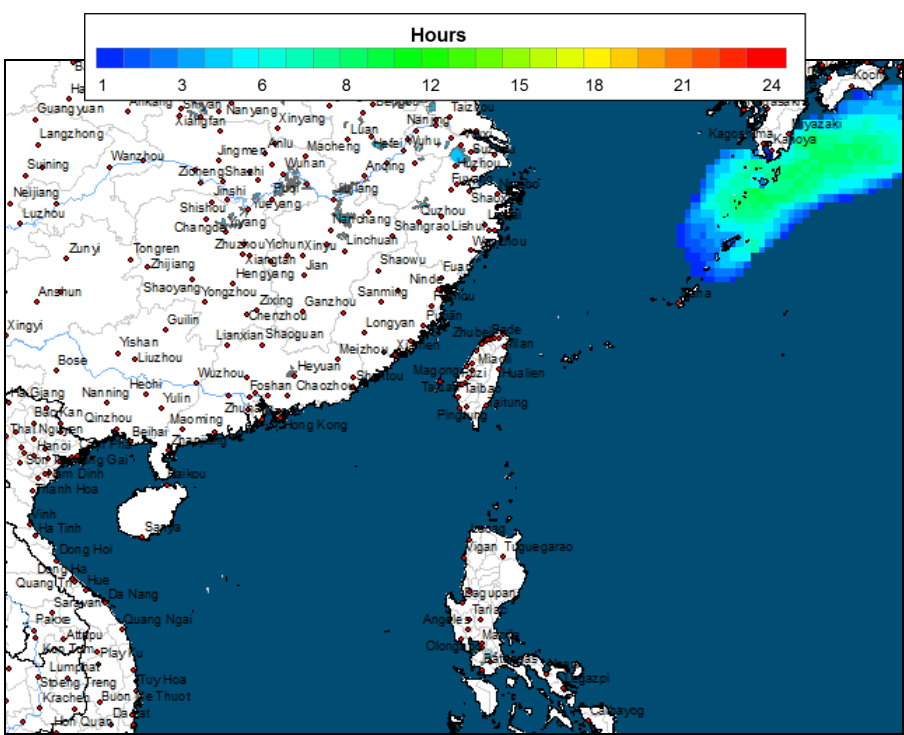
## September 18, 2016

Source: NOAA GFS Wind forecast

Max Wind Speed



Hours Above Threshold



Tropical Storm ( > 35 kts)



CAT 1  
( > 64 kts)

CAT 2  
( > 83 kts)

CAT 3  
( > 96 kts)

CAT 4  
( > 114 kts)

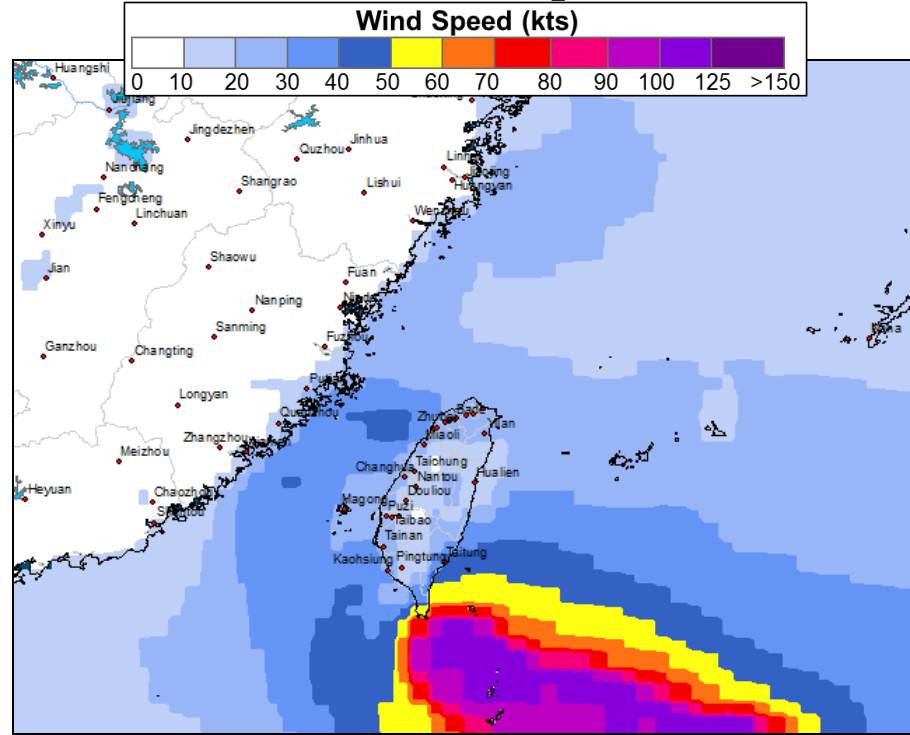
CAT 5  
( > 135 kts)

# China: Super Typhoon Meranti Day 1 Wind Forecast

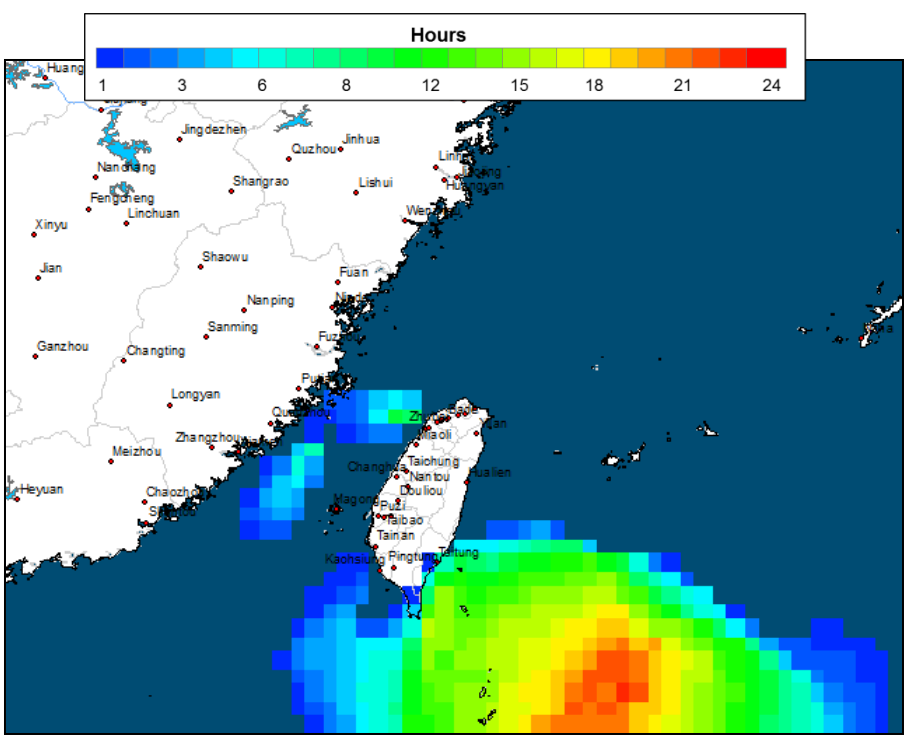
## September 14, 2016

Source: NOAA GFS Wind forecast

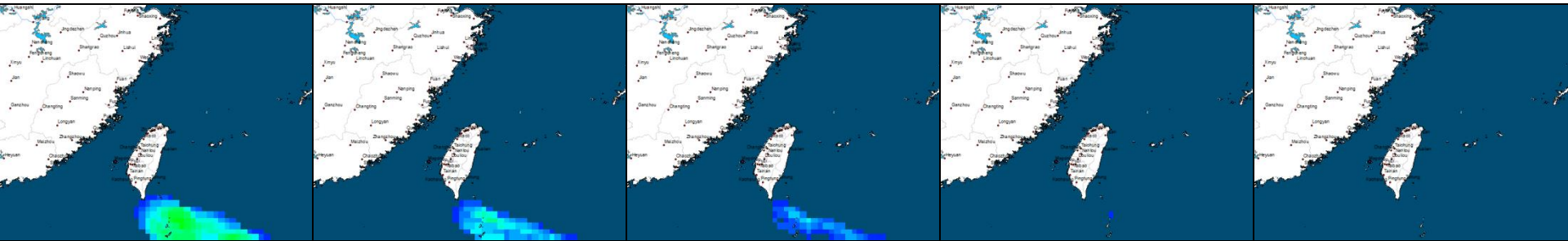
Max Wind Speed



Hours Above Threshold



Tropical Storm ( > 35 kts)



CAT 1  
( > 64 kts)

CAT 2  
( > 83 kts)

CAT 3  
( > 96 kts)

CAT 4  
( > 114 kts)

CAT 5  
( > 135 kts)

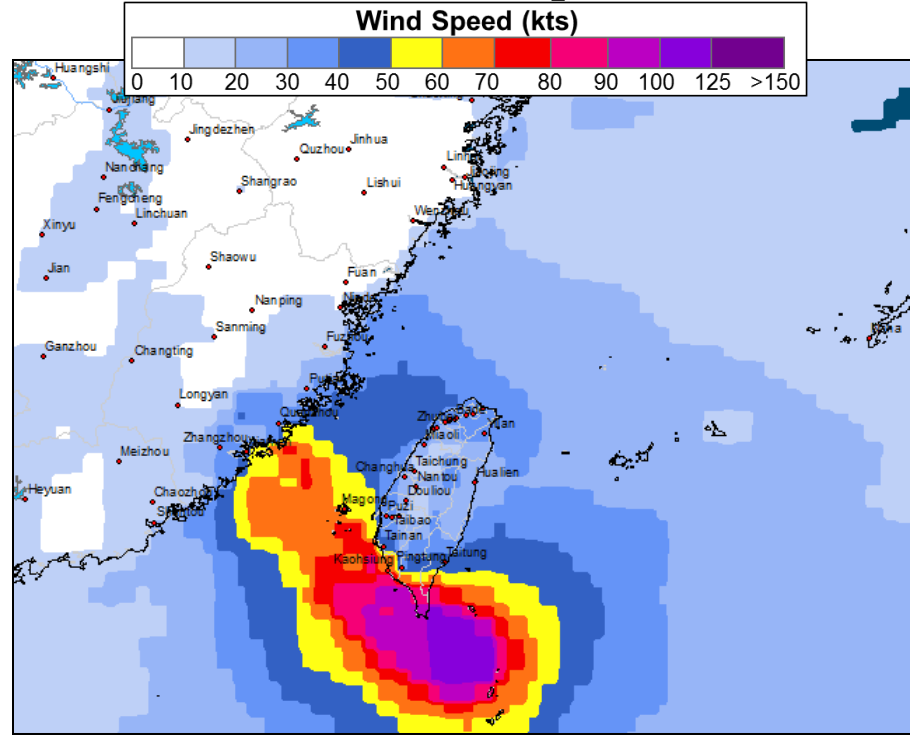


# China: Super Typhoon Meranti Day 2 Wind Forecast

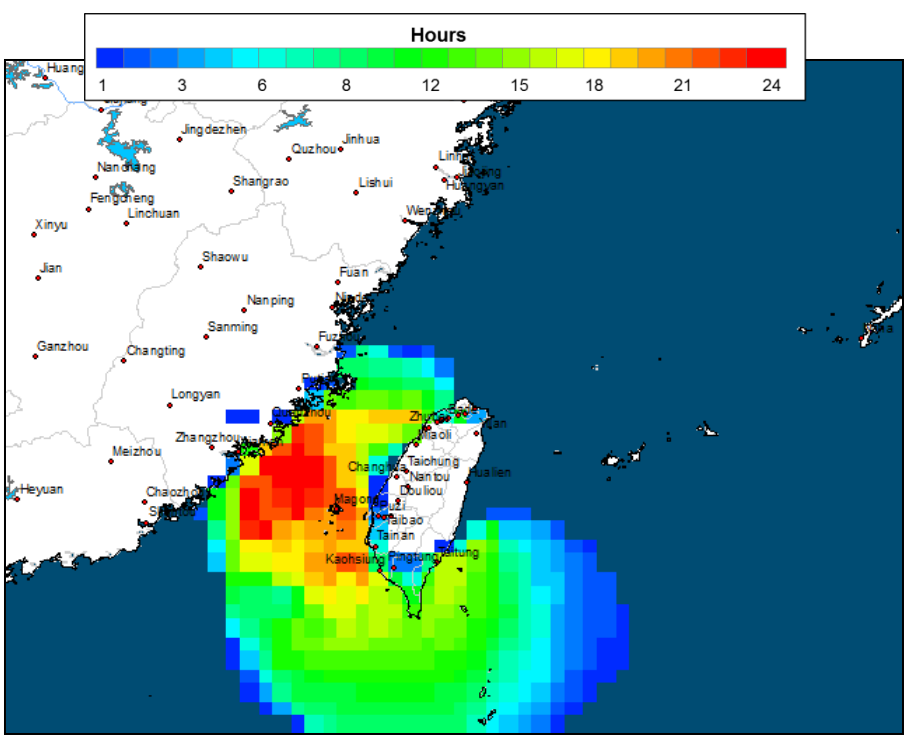
## September 15, 2016

Source: NOAA GFS Wind forecast

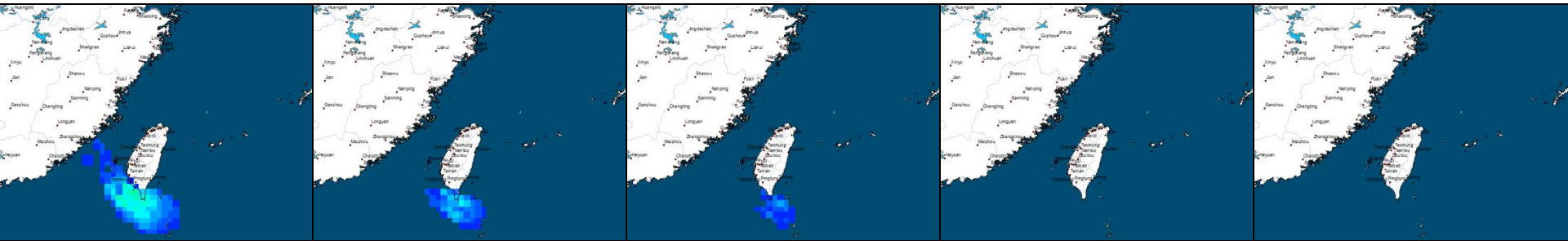
Max Wind Speed



Hours Above Threshold



Tropical Storm ( > 35 kts)



CAT 1  
( > 64 kts)

CAT 2  
( > 83 kts)

CAT 3  
( > 96 kts)

CAT 4  
( > 114 kts)

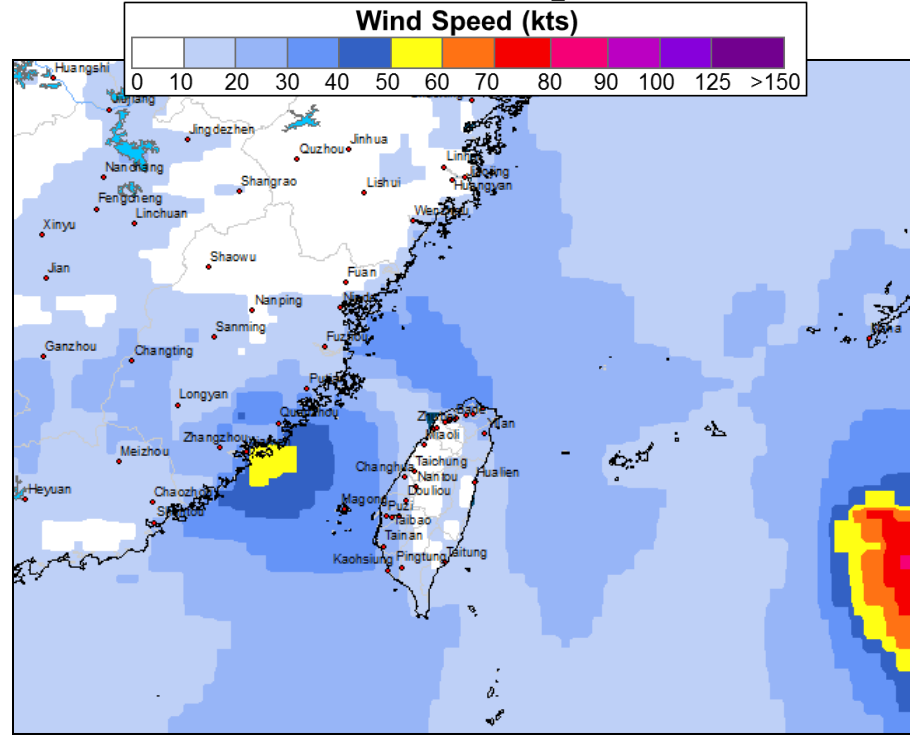
CAT 5  
( > 135 kts)

# China: Super Typhoon Meranti Day 3 Wind Forecast

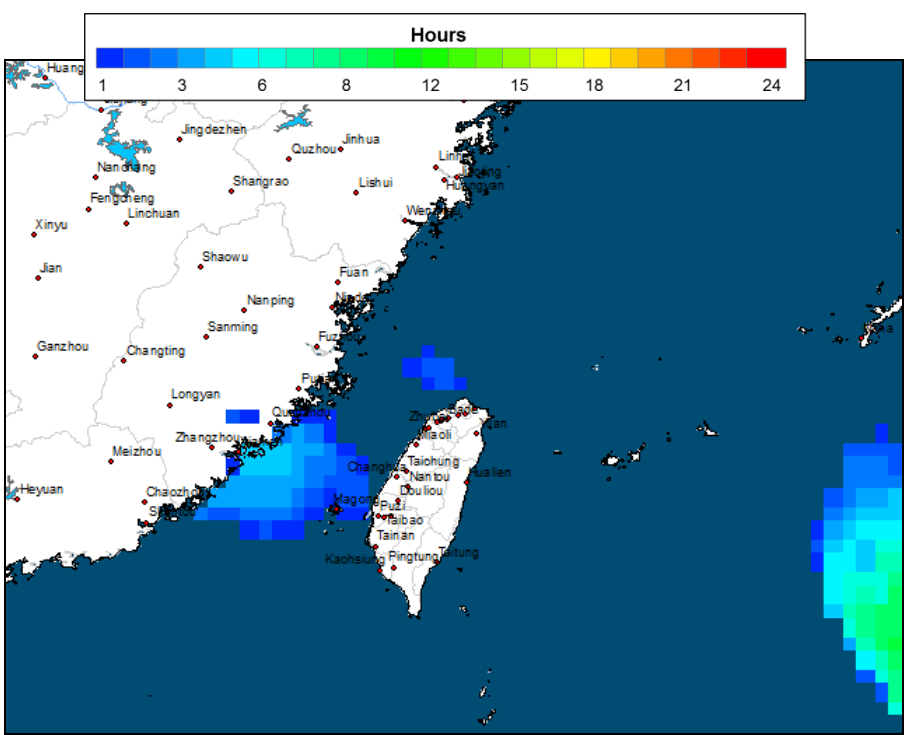
## September 16, 2016

Source: NOAA GFS Wind forecast

Max Wind Speed



Hours Above Threshold



Tropical Storm ( > 35 kts)



CAT 1  
( > 64 kts)

CAT 2  
( > 83 kts)

CAT 3  
( > 96 kts)

CAT 4  
( > 114 kts)

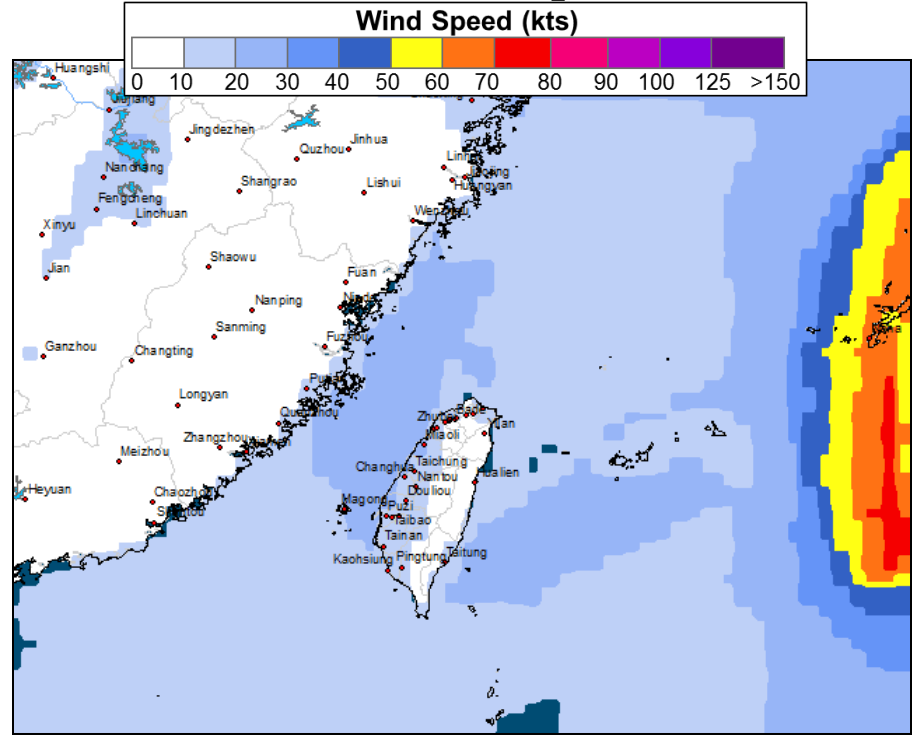
CAT 5  
( > 135 kts)

# China: Super Typhoon Meranti Day 4 Wind Forecast

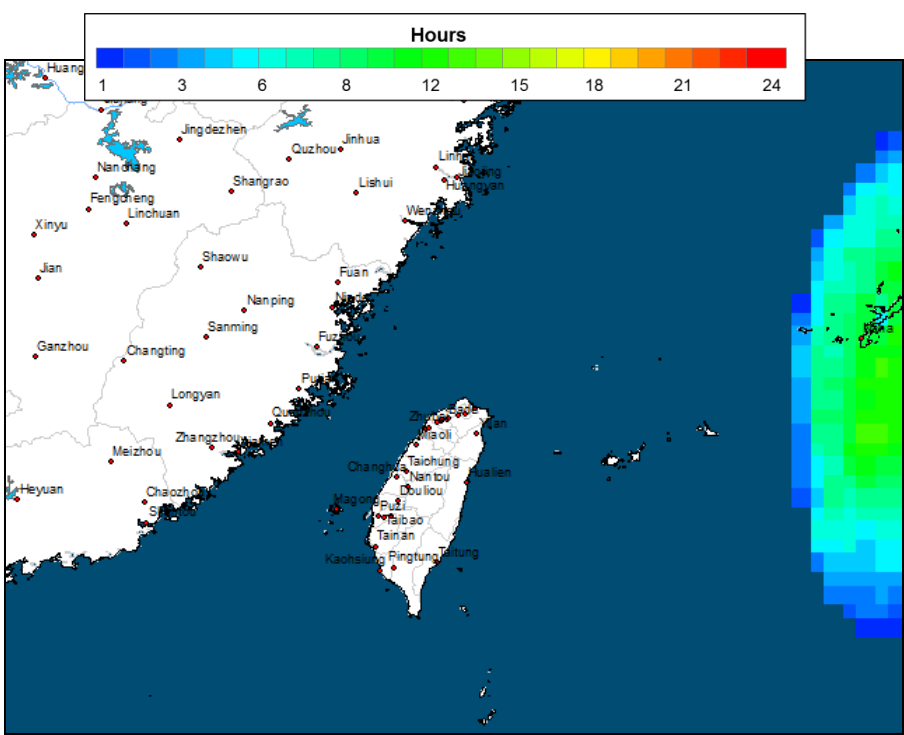
September 17, 2016

Source: NOAA GFS Wind forecast

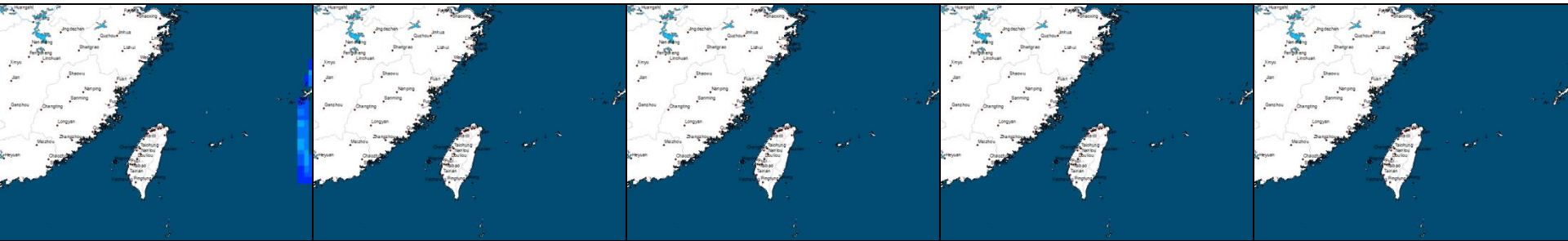
Max Wind Speed



Hours Above Threshold



Tropical Storm ( > 35 kts)



CAT 1  
( > 64 kts)

CAT 2  
( > 83 kts)

CAT 3  
( > 96 kts)

CAT 4  
( > 114 kts)

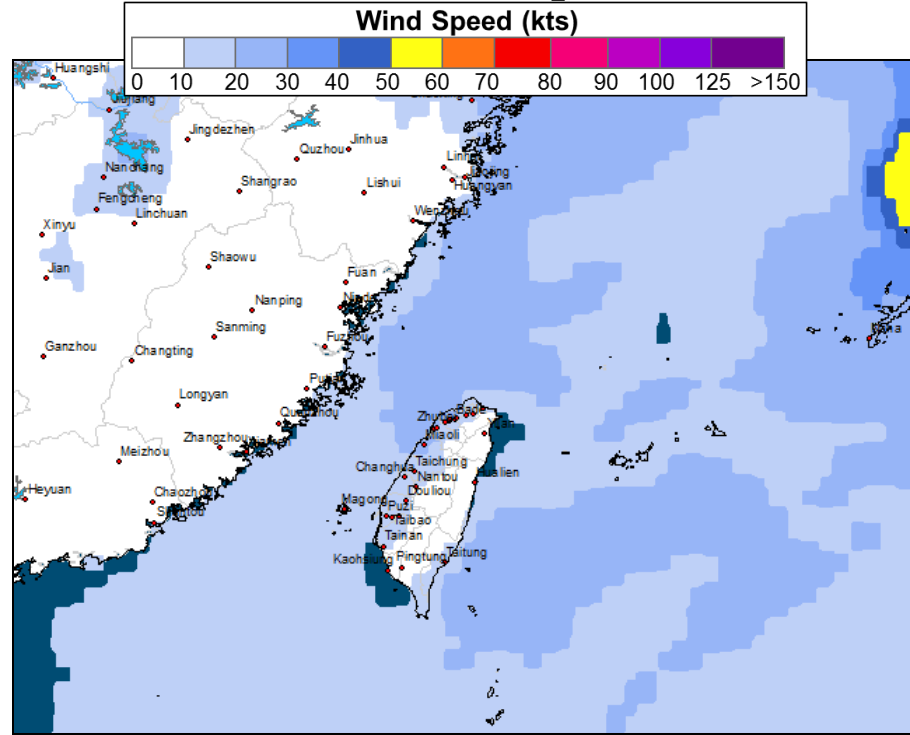
CAT 5  
( > 135 kts)

# China: Super Typhoon Meranti Day 5 Wind Forecast

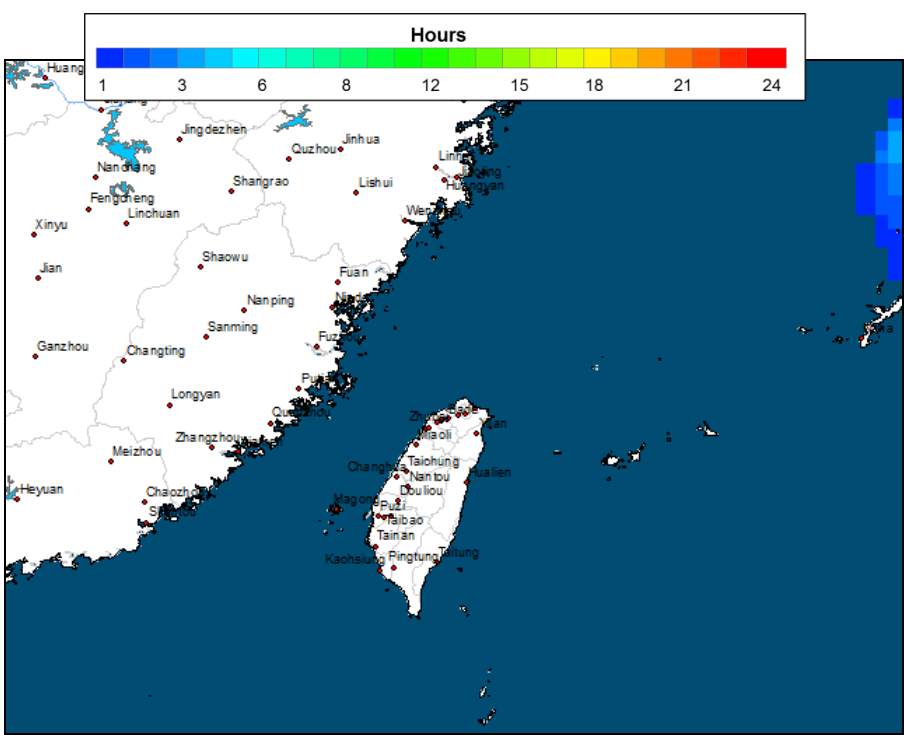
## September 18, 2016

Source: NOAA GFS Wind forecast

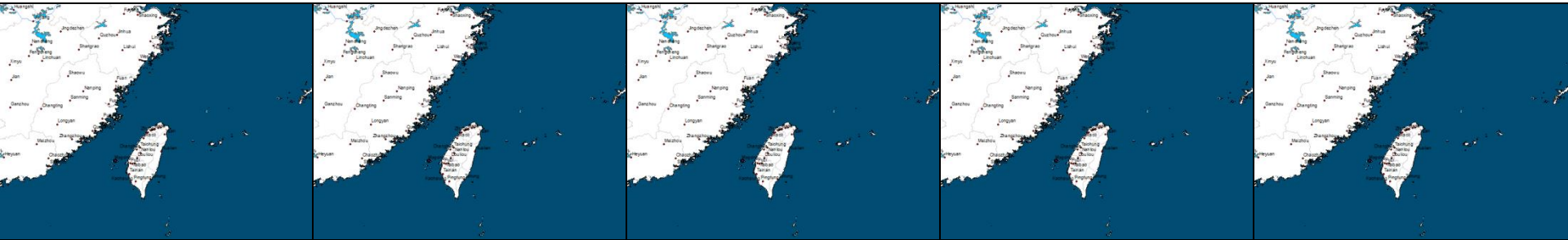
Max Wind Speed



Hours Above Threshold



Tropical Storm ( > 35 kts)



CAT 1  
( > 64 kts)

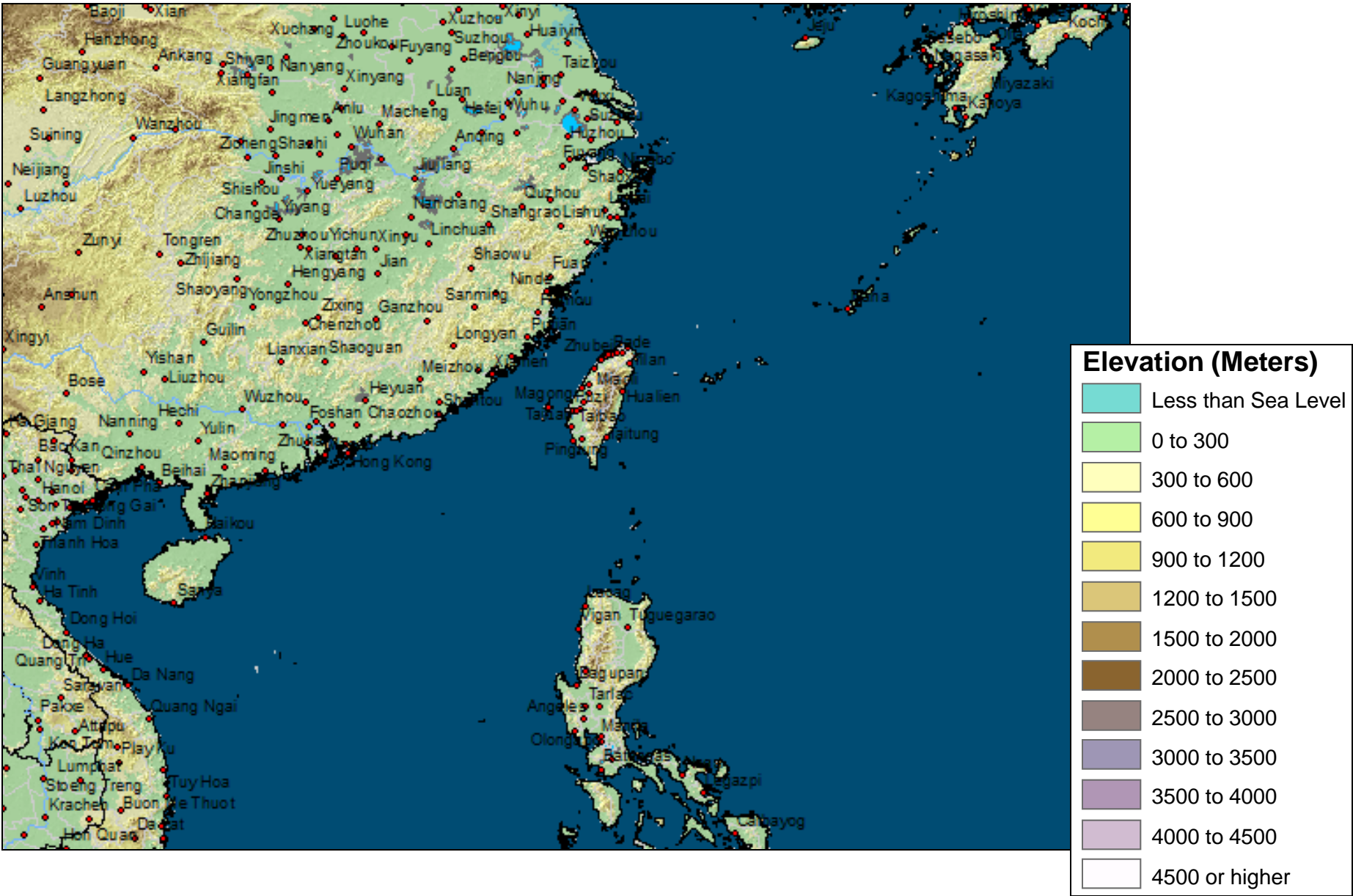
CAT 2  
( > 83 kts)

CAT 3  
( > 96 kts)

CAT 4  
( > 114 kts)

CAT 5  
( > 135 kts)

# China: Elevation





# Hurricane Category: Classification Based on Winds; Probable Damage Estimate

Saffir-Simpson Scale For Hurricane Classification				
Strength	Wind Speed (Kts)	Wind Speed (MPH)	Pressure (Millibars)	Damage
Category 1	64-82 kts	74-95 mph	> 980 mb	Very dangerous winds. Will produce some damage
Category 2	83-95 kts	96-110 mph	965-979 mb	Extremely dangerous winds. Will cause extensive damage.
Category 3	96-113 kts	111-130 mph	945-964 mb	Devastating damage will occur.
Category 4	114-135 kts	131-155 mph	920-944 mb	Catastrophic damage will occur.
Category 5	> 135 kts	> 155 mph	919 mb	Catastrophic damage will occur.
Tropical Cyclone Classification				
Tropical Depression		20-34 kts		
Tropical Storm		35-63 kts		
Hurricane		64+ kts or 74+ mph		